

# Excel By 5

North Madison County

# Resource Manual



CERTIFIED  
EARLY CHILDHOOD COMMUNITY

---

**NORTH MADISON COUNTY**

## **EMERGENCY ACCESS**

**Call 911**

### **City of Canton**

Mayor's Office 601.859.5822  
Parks & Recreation 601.859.4358  
City of Canton Police Department 601.859.2121  
Fire Department 601.859.3112  
Library 601.859.3202

### **City of Flora**

Mayor's Office 601.879.8686  
Fire Department 601.879.9262  
City of Flora Police Department 601.879.8871 Fax: 601.879.3630  
Library 601.879.8835  
City Hall 601.879.8686

### **Madison County Sheriff**

2941 S. Liberty St.  
Canton, MS 39046

# TABLE OF CONTENT

Cover page.....	1
Emergency Access .....	2
Table of Contents.....	3
Associations & Foundations.....	4
Childcare Assistance.....	5
Daycare Centers.....	6-7
Early Childhood Education/Employment Services.....	8
Head Start Centers/Friends of Children.....	9
Housing.....	10
Legal Services.....	11
Libraries.....	12
Medical Providers & Health Services.....	13-14
Mentoring Program .....	15
Miscellaneous.....	16-17
Schools.....	18-20
Social Services Agency.....	21-23
Special Needs Students.....	23
Tobacco.....	24
Tutoring.....	25
United Way.....	26

## *Associations and Foundations*

### **American Heart Association**

4830 McWillie Circle, Jackson, MS 39206  
601.321.1200-----601.321.1201 (fax)

### **Arthritis Foundation**

1355 Peachtree St North East Suite 600  
Atlanta, GA 30309  
1.800.283.7800

### **Diabetes Foundation of MS**

800 Avery Blvd. Ste. 100, Ridgeland, MS 39157  
601.957.7878/ 1.877.336.2873  
601.957.9555 (fax)

### **Jackson Heart Study**

Jackson Medical Mall  
350 W. Woodrow Wilson Ave., Suite 2900/B Jackson, MS 39201  
601.815.5050-----601.979.1412 (fax)

### **Madison County Union for Progress**

270 W. Peace St., Canton, MS 39046  
601.859.6280/ 601.201.2447

### **MS Health Care Association**

303 Brame Rd., Ridgeland, MS 39157  
601.898.8320  
MS Hospital Association  
116 Woodgreen PL, Madison, MS 39110  
1.800.289.8884-----601.368.3200 (fa)

### **MS Kidney Foundation**

3000 Old Canton Rd. Suite 110, Jackson, MS 39216  
601.981.3611-----1.800.232.1592

# *Childcare Assistance*

Central Mississippi Planning and Development District

Mississippi Department of Human Services

Michael Monk – Chief Executive Director

P.O. Box 4935

Jackson, MS 39296

Phone: 601.981.1511 Fax: 601.981.1515

# *Daycare Centers*

## Flora

Name	Capacity
<b>BIG SCHOOL PRE-K EDUCATIONAL LEARNING CENTER</b> 251 Kearney Park Road-suite B Flora, MS 39071 (601) 897-3999	50
<b>FLORA UMC WEEKDAY MINISTRIES</b> 142 Carter Street Flora, MS 39071 (601) 879-9500	100

## Canton

Name	Capacity
<b>AGAPE EDUCATIONAL CENTER</b> 315 Garrett St. Canton, MS 39046 (601) 859-8868	169
<b>EAGLE'S NEST EARLY CHILDHOOD LEARNING CTR</b> 802 West Fulton St. Canton, MS 39046 (601) 855-0509	62
<b>JOHNSON'S NURSERY SCHOOL</b> 613 Coleman Street Canton, MS 39046 (601) 859-8524	30

# *Daycare Centers*

Name	Capacity
<b>LITTLE MIRACLES EARLY CHILDHOOD LEARNING CENTER</b> 929 North Liberty Street Canton, MS 39046 (601) 601-407-6000	37
<b>MOTHER'S LOVE LEARNING CENTER</b> 2015 Hwy 43 North Canton, MS 39046 (601) 859-8080	78
<b>OVER THE RAINBOW</b> 212 South Union Street Canton, MS 39046	150

(601) 859-7224	
<b>SACRED HEART FAMILY CENTER</b> 1493 Hwy 17 Camden, MS 39045 (662) 468-2354 www.sacredheartcamden.com	37
<b>THE CHRISTIAN LEARNING CENTER, INC.</b> 1278 North Old Canton Road Canton, MS 39046 (601) 853-2695	20

# *Early Childhood Education*

## **Excel By 5**

Eileen Beazley, Ed.D. Executive Director

Excel by 5 Inc.

601.918.3672

Website: [www.excelby5.com](http://www.excelby5.com)

# *Employment Services*

## **WIN Job Center**

P.O. Box 450

152 Watford Parkway Drive

Canton, MS 39046

Phone: 601.859.7609

Website: [www.mdes.ms.gov](http://www.mdes.ms.gov)



# *Head Start Centers/Friends of Children*



Name	Capacity
Devine, Chinn, Garrett HS/EHS Center 454 Trollo St Canton MS 39046 (601) 859-2720	350
Dr. Marvin Hogan HS/EHS Center 4667 Hwy 22 Flora MS 39071 (601) 879-3469	90

# *Housing*

**Canton Housing Authority**  
120 Faith Lane, Canton, MS  
Mr. Stan Beasley  
601.859.4032

**HUD – Housing & Urban Development**  
Dr. A.H. McCoy Federal Building  
100 W. Capitol St. Ste. 910 Jackson, MS 39269  
601.956.4757

**FLORA**  
**Pine Garden**  
264 Bannerman Dr.  
Flora, MS 39071  
662.879.8463

## **CANTON**

**Canton Family Unit**  
390-A Rick Dr.  
601.859.4180

**Joe Prichard Homes**  
349 Welch St.  
601.859.4032

**Pat Doherty**  
201 Dobson Ave  
601.859.4032

**Lula B. Covington Apt.**  
1101 Holmes Ave.  
601.859.8300

**Canton Garden Apt.**  
619 Martin Luther King Dr.  
601.859.3997

**Canton Estate**  
388 Ricks Dr.  
601.859.7014

# *Legal Services*

## Legal Line

Hotline: 800.498.1804

## Mississippi Center for Legal Services

414 South State St. 3<sup>rd</sup> Floor

Jackson, MS 39205

Phone: 601.948.6752

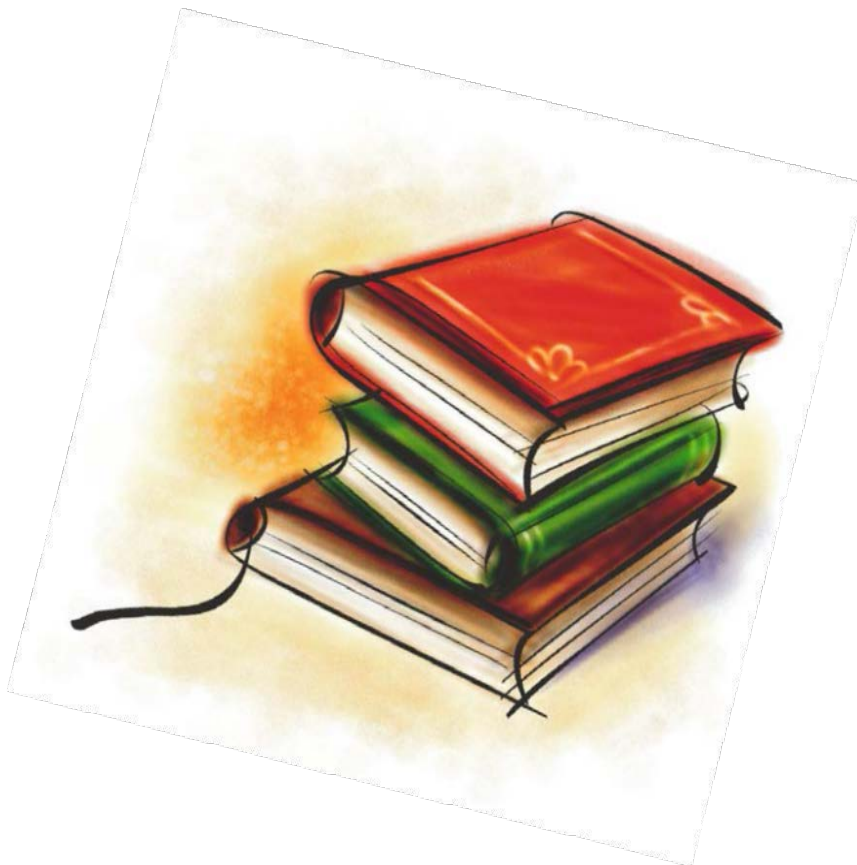
Website: [www.mslegalservices.org](http://www.mslegalservices.org)

# *Libraries*

**Canton Public Library**  
102 Priestley St.  
Canton, MS 39046  
601.859.3202

**Camden Public Library**  
116 Parkside Ave.  
Camden, MS 39045  
662.468.0309

**Flora Public Library**  
168 Carter St. #C  
Flora, MS 39071  
601.879.8835



# Medical Providers and Health Services

## Canton Family Clinic

120 E. Academy St. Canton, MS 39046  
601.859.2611

### Services Provided:

- Internal Medicine
- Family Practice

## CHIP (Children's Health Insurance Plan)

### Mississippi Division of Medicaid

Phone: 1.800.992.7595

Website: [www.mdhs.ms.gov](http://www.mdhs.ms.gov)

## Dr. L. C. Tennin Clinic

122 E. Academy St. Canton, MS 39046  
601.859.8992

### Services Provided:

- Internal Medicine
- Family Practice

## EPSDT (Early and Periodic Screening, Diagnosis and Treatment Program)

### Cool Kids Program

Madison County Health Department

309 Park Drive

Canton, MS 39046

Phone: 601.859.3316

## Merit Health Medical Group

740 Hwy 49 Flora, MS 39071

601.879.8882

### Services Provided:

- Family Practice

## GA Carmichael Family Health

1668 W. Peace St., Canton, MS 39046

601.859.5213

### Services Provided:

- Family Practice
- Pediatric Medicine
- Adolescent Medicine

## Madison-Canton Medical Clinic

1171 Hart St. Canton, MS 39046

601.859.9888- Website: [www.msdh.state.ms.us](http://www.msdh.state.ms.us)

### Services Provided:

- Internal Medicine
- Family Practice
- Emergency Medicine

## Madison County Health Department

317 N. Union St., Canton, MS 39046

601.859.3316

### Services Provided:

- Immunizations
- Family Planning
- Maternity Services

## Merit Health Family Physicians

161 River Oaks Dr. Canton, MS 39046

601.855.4000

### Services Provided:

- Women's Services
- Emergency Department
- Surgical Services

## Mallory Women Health Center

276 Nissan Pkwy, Bldg. C, Ste. 100 Canton, MS 39046

601.855.5275

### Services Provided:

- Obstetricians
- Gynecologists

## MEA Medical Clinic

112 Nissan Dr. Canton, MS 39046

601.859.8550

### Services Provided:

- Occupational
- Ambulatory Care
- Primary Care

## MSU Cares

### Insects in the Home

[www.msucares.com](http://www.msucares.com)



## *Medical Providers and Health Services (Cont.)*

### **Region 8 Mental Health Services**

103 South Lake Circle, Canton, MS 39046

601.859.8371-----601.859.5433 (Fax)

*Services Provided:*

- *Elderly Enhancement Program*
- *Developmental Disabilities Services*
- *Employee Assistance Program*

### **Sunshine Medical Clinic**

156 River Oaks Dr.

Canton, MS 39046

601.855.5287

*Services Provided:*

- *Pediatric Medicine*
- *Adolescent Medicine*

### **U-First Medical Clinic**

3726 S. Liberty Clinic

Canton, MS 39046

601.407.1134

### **WIC (Women, Infant and Children's Nutrition Program)**

#### **Madison County Health Department**

1111 West Peace Street

Canton, MS 39046

601.859.1717

Website: [www.mdhs.ms.gov](http://www.mdhs.ms.gov)

### **Madison County Public Health Department (First Steps)**

309 N Hickory St.

Canton, MS 39046

601.859.3316

# *Mentoring Program*

**In His Steps Ministries**  
3528 N. Liberty St.  
P.O. Box 827-39202  
Canton and Madison Mississippi  
Jasper Bacon Phone  
601.859.5708  
Fax 601.859.5709  
Email: [inhissteps4@juno.com](mailto:inhissteps4@juno.com)

**Mentor Madison**  
Madison Middle School  
1365 Mannsdale Rd.  
Madison, MS 39110  
Lisa Phillips-Principal  
Phone: 601.856.6159  
Fax: 601.853.2254

# Miscellaneous

## Important Phone Numbers

People for Prescription Assistance 1.888.477.2669

Hearing Aid 1.800.648.4327

American Medical Association (Complaints against Doctors) 1.800.621.8335

Eye Care 601.420.5739

Donated Dental 601.932.2200

Breast and Cervical Cancer Program 601.576.7466

National Cancer Institute 1.800.4CANCER/1.800.422.6237

MS Cancer Registry 601.815.5482

LIFE 601.969.4009



## Medicare

General Information 601.354.3090/1.800.948.3090

Part D Coverage 1.866.835.7595

## CHIP (Children Health Insurance Program)

Services and Benefit Information 601.576.4111

Eligibility Information 1.800.421.2408

## MEDICAID

550 High St. Ste. 1000, Jackson, MS 39201

601.359.6050

1.800.421.2408

Helps pay for medical services for low income people

### Canton Regional Office

5360 I-55 N

Jackson, MS 39211

601.978.2399

### Flora

Regional Office in  
Yazoo

110 N. Jerry Clower Blvd. Ste. A

Yazoo, MS

662.746.2309

662.468.2354

Childhood Lead Poison Prevention Program

Phone: 601.576.7447





# Schools

## Canton Public Schools

Canton Public School District Office  
403 Lincoln St.  
Canton, MS 39046  
601.859.4110 Fax: 601.859.4023  
*Superintendent, Dwight Luckett*

**Canton Elementary**  
740 E. Academy St.  
601.859.2400  
Level: 3-5

**Ethel L. Nichols Middle School**  
529 N. Mace St.  
601.859.3741  
Level: 6-8

**Canton Career Center**  
487 N. Union Extension  
601.859.3985  
Level: 10-12

**Jimmie M. Goodloe Elementary**  
551 Finney Rd.  
Canton, MS 39046  
601.407.1809  
Level: K-5

**Canton Educational Services**  
*(Alternative School)*  
529 N. Mace St  
601.859.5010  
Fax: 601.859.5012  
Level: K-12

**Huey L. Porter Middle School**  
551 Finney Rd.  
Canton, MS 39046  
601.407.1809  
Level 6-8

**Canton High School**  
634 Finney Rd.  
601.859.5325  
Fax: 859.2554  
Level 9-12

**McNeal Elementary**  
364 Martin Luther King Dr.  
601.859.3654  
Level: PK

**Reuben B. Myers Canton School of Arts**  
357 Old Yazoo City Rd  
601.855.7819  
Level: PK-5



# Madison County Schools

## **Ann Smith Elementary School**

3065 S. Pear Orchard  
Ridgeland, MS 39157  
601.856.6621

## **Camden Elementary School**

4784 Hwy 43 North  
Camden, MS 39045  
662.468.2833

## **Canton Academy**

191 Academy St.  
Canton, MS 39046  
601.859.5231

## **Career and Technical Center**

142 Calhoun Pkwy  
Madison, MS 39110  
601.859.6847

## **East Flora Elementary School**

4759 Hwy 22 E P.O. Drawer J  
Flora, MS 39710  
601.879.8724

## **Germantown High School**

200 Calhoun Pkwy  
Madison, MS 39110  
601.859.6150

## **Germantown Middle School**

202 Calhoun Pkwy  
Madison, MS 39110  
601.859.0376

## **Highland Elementary School**

330 Barne Rd.  
Ridgeland, MS 39157  
601.853.8103

## **Luther Branson Elementary School**

3903 Hwy 16 East  
Canton, MS 39046  
601.853.8103

## **Madison Avenue Elementary School**

1199 Madison Ave.  
Madison, MS 39110  
601.856.2951

## **Madison Avenue Upper Elementary School**

1209 Madison Ave.  
Madison, MS 39110  
601.856.6609

## **Madison Central High School**

1417 Highland Colony Pkwy  
Madison, MS 39110  
856.7121

## **Madison Crossing Elementary School**

300 Yandell Rd.  
Madison, MS 39110  
601.898.7710

## **Madison Middle School**

1365 Mannsdale  
Madison, MS 39110  
601.605.4171

## **Madison Station Elementary**

459 Reunion Pkwy  
Madison, MS 39110  
601.856.6246

## **Mannsdale Elementary School**

443 Mannsdale Rd.  
Madison, MS 39110  
601.879.0309

## **Northeast Madison Middle School**

820 Sulphur Spring Rd.  
Canton, MS 39046  
601.855.2409

## Madison County Schools *(Cont.)*

### **Olde Towne Middle School**

210 Sunnybrook Rd.  
Ridgeland, MS 39157  
601.898.8730

### **Ridgeland High School**

586 Sunnybrook Rd.  
Ridgeland, MS 39157  
898.5023

### **Rosa Scott School**

200 Crawford St.  
Madison, MS 39110  
601.605.0054

### **Shirley Simmons Middle School**

820 Sulphur Spring Rd.  
Canton, MS  
601.855.2409

### **Velma Jackson Magnet School**

2000-A Loring Rd.  
Camden, MS 39045  
662.468.2531



## *Social Services Agencies*

### **American Red Cross -Central MS Chapter**

875 Riverside Dr.  
Jackson, MS  
601.353.5442---601.353.5466 (Fax)

#### *Services Provided*

- *Disaster Relief*
- *Shelter and supplies*

### **Catholic Charities**

850 E. River PL  
Jackson, MS 39201  
601.355.8634

#### *Services Provided:*

- *Adoption Services*
- *Counseling Services*
- *Domestic Violence Services*
- *Alcohol and Drug Services*
- *Immigration Services*
- *Therapeutic Foster Care*
- *Hope Haven Residential*

### **Central MS Planning Development & District**

1170 Lakeland Dr.  
Jackson, MS  
601.981.1511 -- 601.981.1515 (Fax)

#### *Services Provided:*

- *Assistance*
- *Awareness and Information*
- *Access*

### **Child Support Customer Service & Case Info**

Department of Health and Human Services  
Phone: 1.844.694.2347

- *Parenting Information*

### **Families First For Mississippi**

1425 Lakeland Dr.  
Jackson, MS 39216  
Phone: 601.366.6405  
Website: [www.familiesfirstforms.org](http://www.familiesfirstforms.org)

### **MADCAPP—Madison County Allied Against Poverty**

181 Watford Parkway Drive  
Canton, MS 39046  
601.407.1404

#### *Services Include:*

- *Food Pantry*
- *Clothing Closet*
- *Community Kitchen*

### **MCCSA-Madison County Citizens Services Agency**

1005 W. Peace Street (Transportation)-601.391.1993  
140 W. Center Street (Other Services)-601.855.5710  
Canton, MS 39046

Website: [mccsaweb.org](http://mccsaweb.org)

- *Transportation*
- *Congregate Meals*
- *Ombudsman*
- *LIHEAP*
- *Information and Referral*
- *Outreach*
- *Commodity Supplemental Food Program (CSFP)*

### **Madison County WIN Job Center**

152 Watford Pkwy Dr.  
Canton, MS 39046  
601.859.7609

#### *Services Provided:*

- *Job Placement*
- *Veteran Services*
- *Services For People with Disabilities*

**Madison County Department of Human Services**  
867 MLK Drive  
Canton, MS  
601.859.1276

**MS Department of Human Services  
Division of Aging and Adult Services**  
750 N. State St.  
Jackson, MS  
601.359.4929/1.800.948.3090  
Website: [www.mdhs.state.ms.us](http://www.mdhs.state.ms.us)

*Services Provided:*

- *Foster Care*
- *Transportation*
- *Information and Assistance*
- *Nutrition*
- *SNAP (Supplemental Nutrition Assistance Program)*

**Mississippi Families for Kids**  
407 Briarwood Dr. Ste. 209  
Jackson, MS 39206  
Phone: 601.957.7670  
Website: [www.mffk.org](http://www.mffk.org)

**MS Get Help  
Aging & Disability Resource Center**  
1170 Lakeland Dr.  
Jackson, MS 39216  
[www.mississippigethelp.org](http://www.mississippigethelp.org)  
1.888.995.9925

*Services Provided:*

- *Community Resources*
- *Referrals for Case Management*
- *Public/Private Benefits*

**Our Daily Bread**  
349 N. Canal St.  
Canton, MS 39046  
601.859.9211

*Services Provided:*

- *Meals on Wheels*
- *Food Pantry*
- *Clothing Closet*
- *Rental Assistance*
- *Clothing closet*

**Pine Grove Association**  
348 Renfroe Rd.  
Canton, MS 39046

*Services Provided:*

- *Individual and Family Social Services*

**Sacred Heart Church**  
1493 Hwy 17  
Camden, MS 39045  
662.468.3164

*Services Provided:*

- *Daycare*
- *Family Health Clinic*
- *Department of Human Services*
- *Credit Union*
- *After School/Summer Enrichment Program*
- *Senior Meal Program*
- *Grocery Program*
- *Mobile Home/Home Rehabilitation*

**The Salvation Army of the Greater Jackson Area**  
Family Store & donation Drop Off (*Temporary*)  
590 Raymond Rd.  
Jackson, MS 39204  
601.717.4049

**The Salvation Army of the Greater Jackson Area**  
110 Presto Lane  
Jackson, MS 39206  
601.982.4881

*Services Provided:*

- *Thrift Store (clothing, furniture, etc.)*
- *Entergy Power to Care  
Center of Hope Transitional Shelter*

**South Central Community Action Agency**  
140 W. Center St.  
Canton, MS 39046  
6601.407.5473

- Services Provided*
- *Weatherization*
  - *Rental Assistance*
  - *Medication*
  - *Gas*
  - *Obtaining and maintaining adequate housing*

## *Special Needs Students*

**Canton Public School District Department of Special Services**  
Laura Jones Ed. D. - Exceptional Services Director  
634 Finney Rd.  
Canton, MS 39046  
Phone 601.859.2179

**Madison County School District Department of Special Services**  
Lynn Slay-Special Services Director  
117 Fourth St.  
Flora, MS 39071  
Phone 601.879.3000

**Mississippi Department of Education-Office of Instructional Programs  
& Services Office of Special Education**

Central High School Building  
359 N. West Street  
P.O. Box 771  
Jackson, MS 39205  
Phone: 601.359.3498  
Fax: 601.359.1829

# *Tobacco*

## **Mississippi Tobacco Free Coalition of Madison, Yazoo, and Holmes**

Sharon Nettles  
200 Park Circle, Ste.3  
Flowood, MS 39232  
Phone: 601.420.4493

## **Mississippi Tobacco Quitline**

385-B Highland Colony Parkway, Ste. 504  
Ridgeland, MS 39157  
Phone: 1.800.QUITNOW -1.800.784.8669  
Fax: 1.601.899.8650  
Email: [quitline@lgh.org](mailto:quitline@lgh.org)



# *Tutoring*

## **Mathnasium**

670 Highway 51, Suite G

Ridgeland, MS 39157

Phone: 601.707.5379

[www.mathnasium.com](http://www.mathnasium.com)

## **SyLvan Learning Center**

4915 I-55 North Ste. 106-A

Jackson, MS 39206

Phone: 601.207.1035

## **The Mathworks Inc.**

6700 Old Canton Rd.

Ridgeland, MS 39157

Phone: 601.559.8009

Website: [www.themathworksinc.com](http://www.themathworksinc.com)

## **Mississippi Community Education Center**

Madison Office

961 Madison Ave.

Madison, MS 39210

Phone: 601.326.6404

# *United Way*

## United Way of the Capital Area

843 N. President Street

P.O. Box 23169

Jackson, MS 39225

Phone: 601.948.4725

[www.myunitedway.com](http://www.myunitedway.com)

Serve Hinds, Madison and Rankin Counties

- *Quality Affordable Housing*
- *Quality Affordable Healthcare*

Resources Number: 211

# Special Thanks

Hederman Brothers

United Way of the Capital Area

North Madison County  
Excel By 5  
Lead Agency



**UNITED WAY OF THE CAPITAL AREA**  
Serving Hinds, Madison & Rankin Counties

*Updated 6 /12 / 18*