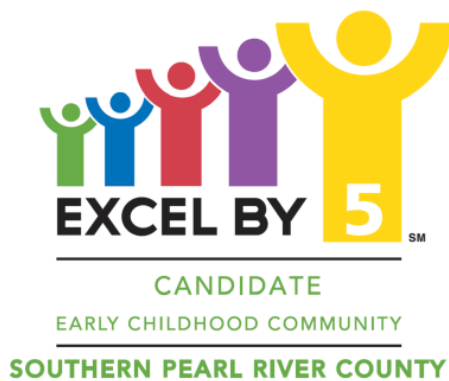


2017

# Pearl River County, MS Family Resource Directory



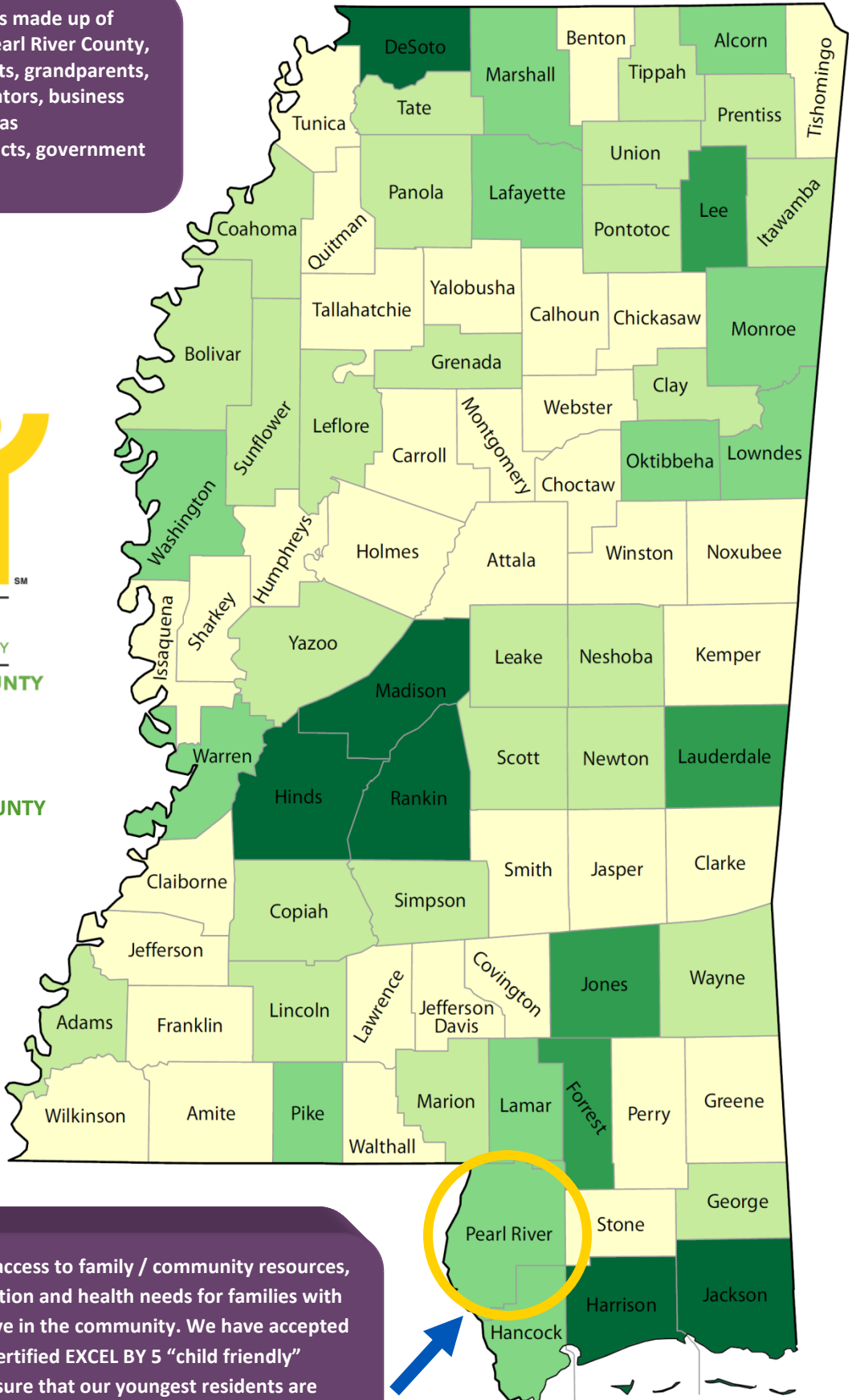
SOUTHERN PEARL RIVER COUNTY  
(SPRC) COMMUNITY COALITION

The SPRC EXCEL BY 5 COALITION is made up of members from communities in Pearl River County, MS. This coalition includes parents, grandparents, health care providers, early educators, business leaders, and civic leaders, as well as representatives from school districts, government agencies, and faith-based groups.



CANDIDATE  
EARLY CHILDHOOD COMMUNITY  
SOUTHERN PEARL RIVER COUNTY

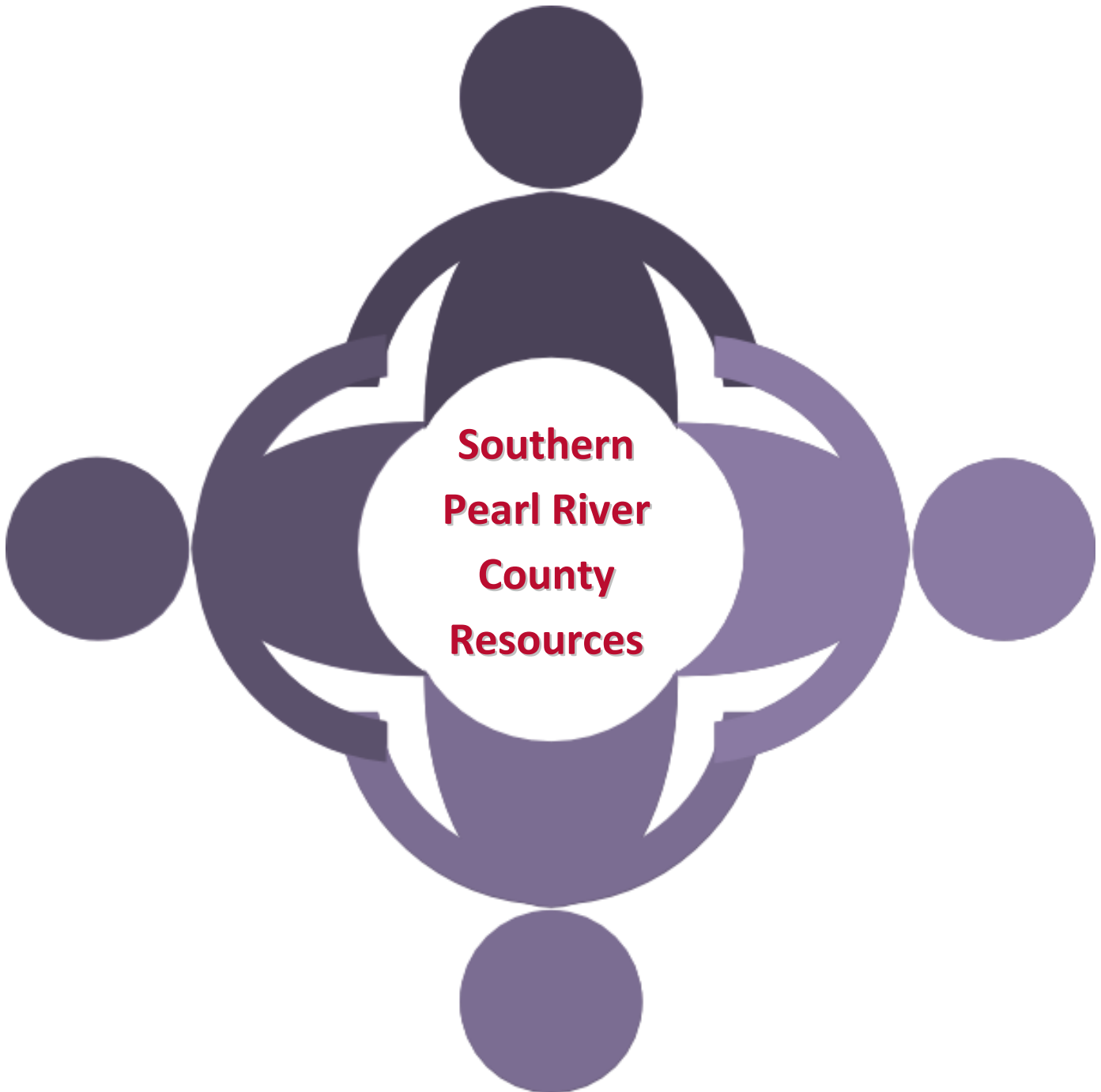
[WWW.EXCELBY5.COM  
/SOUTHERN-PEARL-RIVER-COUNTY](http://WWW.EXCELBY5.COM/SOUTHERN-PEARL-RIVER-COUNTY)



Our main goal is to provide access to family / community resources, as well as identify the education and health needs for families with children from birth to age five in the community. We have accepted the challenge to become a certified EXCEL BY 5 "child friendly" community. We strive to ensure that our youngest residents are safe, healthy, and ready to learn!

## ABOUT USING THIS GUIDE

Our intention with this resource guides is to increase public access to resources available to families with young children within Southern Pearl River County communities. Most of our listings are for locations in the Picayune, Carriere, and Poplarville, MS areas. Our volunteers will check the information for all of the listed services for accuracy annually. If you have a question about costs, services or eligibility, please call ahead.



## RESOURCE INDEX

24-HOUR EMERGENCY & HOTLINE NUMBERS.....	#
IMPORTANT PHONE NUMBERS & INFORMATION.....	#
EMERGENCY RADIO STATIONS.....	#
STATE SERVICE CENTERS.....	#

## PEARL RIVER COUNTY SERVICE AGENCIES

ABUSE/NEGLECT .....	#
COLLEGES/UNIVERSITIES .....	#
EARLY INTERVENTION SERVICES / DISABILITIES.....	#
EDUCATION: EARLY CHILDHOOD / CHILDCARE (LICENSED) .....	#
EDUCATION: PRIMARY / SECONDARY - PUBLIC.....	#
EDUCATION: PRIMARY / SECONDARY - PRIVATE .....	#
EMPLOYMENT SERVICES .....	#
LIBRARIES .....	#
FAMILY SUPPORT SERVICES: LOCAL AGENCIES .....	#
FAMILY SUPPORT SERVICES: REGIONAL AGENCIES .....	#
FINANCIAL SERVICES.....	#
FINANCIAL TRAINING .....	#
PARENTING / PARENTING EDUCATION .....	#
MEDICAL: HOSPITALS .....	#
MEDICAL: PEDIATRIC / FAMILY CLINICS.....	#
MEDICAL: PEDIATRIC / FAMILY DENTISTRY.....	#
MEDICAL: VISION SERVICES .....	#
RECREATIONAL ACTIVITIES .....	#
YOUTH SUPPORT PROGRAMS .....	#

## 24-HOUR EMERGENCY & HOTLINE NUMBERS

### **Emergencies: Fire/Rescue & Police: 911**

There are three main emergency service functions:

- Police - providing community safety and acting to reduce crime against persons and property
- Fire department (fire and rescue service) - providing firefighters to deal with fire and rescue operations, and may also deal with some secondary emergency service duties
- Emergency medical services (EMS) - providing ambulances and staff to deal with medical emergencies

### **Abused Persons Crisis Line (Child & Adult): 1-800-222-8000**

To report exploitation, abuse or neglect of a CHILD, senior, or vulnerable adult.

<http://www.mdhs.state.ms.us/>

### **Alcoholics Anonymous (South Mississippi) 24-Hour Help Line: 1-855-444-9225**

[www.aagulfcoast.org](http://www.aagulfcoast.org)

A fellowship of men and women who share their experience, strength and hope with each other that they may solve their common problem and help others to recover from alcoholism. The only requirement for membership is a desire to stop drinking. There are no dues or fees for AA membership; we are self-supporting, through our own contributions. AA is not allied with any sect, denomination, politics, organization or institution; does not wish to engage in any controversy; neither endorses nor opposes any causes. Our primary purpose is to stay sober and help other alcoholics to achieve sobriety.

### **Breastfeeding Information Line: 1-800-545-6747**

This helpline provides information, education, and support for women who want to breastfeed [http://msdh.ms.gov/msdhsite/\\_static/41,0,144.html](http://msdh.ms.gov/msdhsite/_static/41,0,144.html)

### **Children's Medical Program: 1-800-844-0898**

If your child has a chronic illness or disability, we may be able to help. CMP will work with you and your health providers to arrange and organize services, as well as, identify needs and resources to improve the health and well-being of your child. Please contact us for information to determine how we may assist your child and family.

[http://msdh.ms.gov/msdhsite/\\_static/41,0,163.html](http://msdh.ms.gov/msdhsite/_static/41,0,163.html)

### **Early Intervention Systems: 1-800-451-3903**

If you have a child that is under three years old, First Steps may provide developmental services and other resources to help your child meet his or her maximum potential. Services provided include (but are not limited to): screenings, evaluations and assessments,

Individualized Family Service Plans (IFSPs), Early Intervention services, and transition plans to preschool services under Part B of IDEA, or other programs.

<http://www.msdh.state.ms.us/msdhsite/index.cfm/41,0,74,html>

**Immunizations for Children: 1-800-634-9258**

Immunizations against childhood diseases are required by Mississippi law in order to enter school, Head Start, or day care. Specific vaccinations are also recommended for students entering high school or college. The Mississippi State Department of Health provides all necessary immunizations at low cost. Immunizations are free if you qualify for the Vaccines for Children program.

[http://www.msdh.state.ms.us/msdhsite/\\_static/14,0,71.html](http://www.msdh.state.ms.us/msdhsite/_static/14,0,71.html)

**Women's Health: 1-800-721-7222**

We offer family planning and reproductive health services at over 100 local health departments and county clinics. We provide a wide range of confidential and professional reproductive health services to both men and women, regardless of income. You may be eligible for free or reduced cost services based on a sliding fee scale.

[http://msdh.ms.gov/msdhsite/\\_static/41,0,107.html](http://msdh.ms.gov/msdhsite/_static/41,0,107.html)

**Women, Infants and Children (WIC): 1-800-359-7832**

WIC is a special supplemental food program for pregnant, breastfeeding, and post-partum women, infants and children under five years of age. WIC helps you and your baby get healthy foods and healthy advice in the first years of life.

[http://msdh.ms.gov/msdhsite/\\_static/41,0,128.html](http://msdh.ms.gov/msdhsite/_static/41,0,128.html)

**IMPORTANT PHONE NUMBERS & INFORMATION**

**Pearl River County General Information**

Millard: 601-403-2500

Picayune: 601-749-7700

Poplarville: 601-403-2300

**UTILITIES**

**City of Picayune Water & Natural Gas**

203 Goodyear Blvd, Picayune, MS 39466  
(601) 798-9776

<http://www.picayune.ms.us/departments/utility>

**Pearl River Central Water Assn**

P. O. Box 419, McNeil, MS 39457  
(601) 798-3103 or (601) 798-3103

**Pearl River County Utility Authority**

100 Street A, Suite F, Picayune, MS 39466  
(601) 799-5259

[www.prc-ua.org](http://www.prc-ua.org)

**Sunny Oaks Water Assn.**

P.O. Box 112, Poplarville, MS 39470  
(601) 795-3170

**Bi-County Water Association Inc.**

Route 4 Box 381, Poplarville, MS 39470  
(601) 795-4565

**Carnes Utility Association Inc.**

1084 Carnes Road, Wiggins, MS 39577  
(601) 928-5918

**Center Water Association Inc.**

1050 Bouie Road, Carriere, MS 39426  
(601) 799-8384 or (601) 798-1401

**Hide-A-Way Lake Club Inc.**

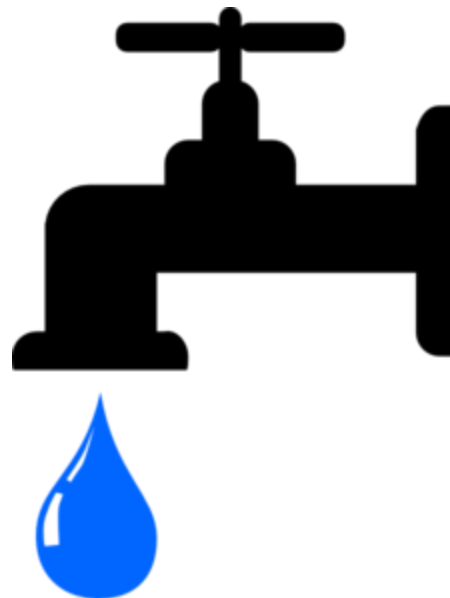
P. O. Box 1011, Picayune, MS 39466  
(601) 798-1484

**Nicholson Water & Sewer Assn**

P.O. Box 309, Nicholson, MS 39463  
(601)798-9696

**North Lumberton Utility Assn. Inc.**

410 North Front Street, Lumberton, MS 39455  
(601) 796-4941



**FIRE NON-EMERGENCY**

Picayune Fire Department  
220 S Haugh Ave, Picayune, MS 39466  
(601) 799-0614

Picayune Fire Chief's Office  
2233 Adcox Rd, Picayune, MS 39466  
(601) 798-6513

Picayune Fire Department  
1700 Palestine Rd, Picayune, MS 39466  
(601) 798-4811

Poplarville Fire Department  
1390 S Main St, Poplarville, MS 39470  
(601) 795-4313

Picayune Fire Department  
2233 Adcox Rd, Picayune, MS 39466  
(601) 798-7862

Lumberton Fire Department  
702 9th Ave, Lumberton, MS 39455  
(601) 796-8901

McNeill Volunteer Fire Department  
106 Library St, Picayune, MS 39466  
(601) 798-7065

Poplarville Fire Department  
110 S Main St, Poplarville, MS 39470  
(601) 795-2200



<p><b>Henleyfield Volunteer Fire Department</b>  5585 MS-43, Carriere, MS 39426  (601) 799-5887</p>	<p><b>Carriere Volunteer Fire Department</b>  7414 US-11, Carriere, MS 39426  (601) 799-2345</p>
<p><b>POLICE NON-EMERGENCY</b></p> <p><b>Pearl River County Sheriff Office</b>  200 Julia Street, Poplarville, MS 39470  (P) 601-795-2241 or 601-798-5528</p> <p><b>Picayune Police Department</b>  328 South Main Street, Picayune, Mississippi, 39466  (P) 601-798-7411; (F) 601-798-7412</p> <p><b>Poplarville Police Department</b>  305 Highway 26, Poplarville, Mississippi, 39470  (P) 601-795-4447; (F) 601-795-2884</p> 	
<p><b>TELEPHONE SERVICES: LAND LINES</b></p> <p><b>AT&amp;T</b>  231 Frontage Road, Picayune, MS 39466  (601) 799-3905  <a href="http://www.att.com">www.att.com</a></p> <p><b>CHARTER COMMUNICATIONS</b>  321 W. Canal Street, Picayune, MS 39466  (601) 202-0366 or (866) 959-6997  <a href="http://www.charter.com">www.charter.com</a></p>	<p><b>GAS / ELECTRIC COMPANIES</b></p> <p><b>Mississippi Power</b>  114 Elizabeth Street, Picayune, MS 39466  Customer Care: 1-800-532-1502;  Report an outage: 1-800-487-3275  <a href="http://www.mississippipower.com">www.mississippipower.com</a></p> <p><b>Coast Electric</b>  6375 US 11. Picayune, MS 39466  Customer Care: 601-798-5013  Report an outage: 1-877-769-2372  <a href="http://www.coastepa.com">www.coastepa.com</a></p>





## EMERGENCY RADIO STATIONS

### **WRJW (1320AM)**

WRJW is a 5000 watt facility with a history of service to our market, Pearl River County, Hancock County, and several Louisiana Parishes. The WRJW tower is strategically located to provide an optimum signal that stretches from New Orleans to the Mississippi Gulf Coast, while reaching South Central Mississippi along with St. Tammany and Washington Parishes.

## STATE OF MISSISSIPPI SERVICE CENTERS

### **Child Support Enforcement, Human Services**

750 North State Street, Jackson, MS 39202

Phone: 601-359-4861

<http://www.mdhs.state.ms.us/child-support/>

The mission of the Division of Child Support Enforcement is to provide child support services to ensure that children receive financial and emotional support from both parents and empower families to become self-sufficient. The Division of Child Support Enforcement (DCSE) offers services to Mississippi's children and families by securing financial and medical support. Every child deserves the love and support of both parents to develop into the most productive adult possible. DCSE operates 84 offices in 82 counties to ensure the availability of child support services to all eligible persons in the State of Mississippi.

### **Economic Assistance**

750 North State Street, Jackson, MS 39202

Phone: 601-359-4419

<http://www.mdhs.state.ms.us/>

The mission of the Division of Economic Assistance is to promote self-sufficiency and personal responsibility for all Mississippians.

### **Emergency Medical Services for Children**

570 East Woodrow Wilson Drive, Jackson, MS 39216

Phone: 601-576-7400

[http://msdh.ms.gov/msdhsite/\\_static/48.html](http://msdh.ms.gov/msdhsite/_static/48.html)

The mission of the Mississippi Emergency Medical Services for Children Program is to prevent and reduce childhood, adolescent, and youth death and disability resulting from illness and injury.

**Mississippi Council on Developmental Disabilities**

239 North Lamar St. 1101 Robert E. Lee Building, Jackson, MS 39201

Phone: 601-359-6242

<http://www.msccd.org/>

The CDD is an appointed group of people designed to support individuals with developmental disabilities, their families and the community they live

**Mississippi Department of Employment Security**

Picayune WIN Job Center

2005 Wildwood Rd, Picayune, MS 39466

Phone: 601-798-3472

<http://mdes.ms.gov/>

Provides help for businesses and job seekers through a variety of employment, training and business services.

**Mississippi Department of Mental Health**

1101 Robert E. Lee Bldg. 239 North Lamar Street, Jackson, MS 39201

Phone: 1-877-210-8513

<http://www.dmh.state.ms.us/>

Supporting a better tomorrow by making a difference in the lives of Mississippians with mental illness, substance abuse problems and intellectual/developmental disabilities one person at a time.

**Mississippi Department of Public Safety**

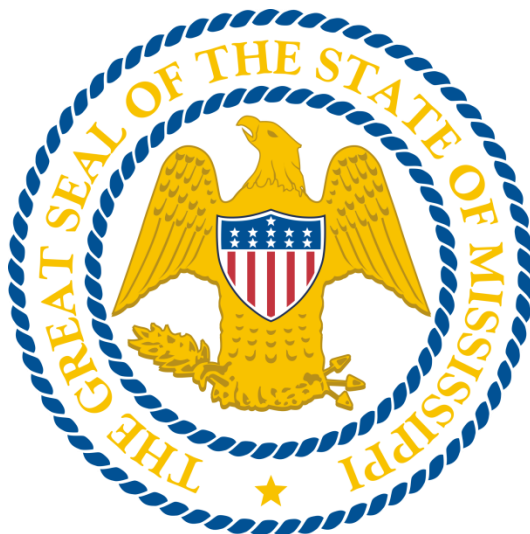
Department Of Motor Vehicles - Driver License

917 Goodyear Boulevard, Picayune, MS 39466

Phone: (601) 799-1428

<http://www.dps.state.ms.us/driver-services/new-drivers-license/district-one-locations/>

Drivers license issuance, renewals, IDs, written tests, and road tests.



## PEARL RIVER COUNTY, MS RESOURCES (A-Z)

### ABUSE / NEGLECT

#### **Pearl River County Department of Human Services**

417 Hwy 11 N., Poplarville, MS 38470

Phone: (601) 795-3038; Fax: (601) 964-2331

Services: Mental Health/Drugs and Alcohol; Human Services; Health and Medical Services; Senior Citizen Services; Employment Assistance and Opportunities; Placement Resources; Pregnancy and Parenting; Housing; Child Care; Educational Services; Children's Programs; Support Service; Courts and Law Enforcement



#### **Report Abuse**

Report abuse, neglect and exploitation in Mississippi

Mississippi Centralized Intake

1-800-222-8000 ; (601) 432-4570

[www.msabusehotline.mdhs.ms.gov](http://www.msabusehotline.mdhs.ms.gov)

### COLLEGES / UNIVERSITIES (within 25 miles)

#### **PEARL RIVER COMMUNITY COLLEGE (PRCC)**

Poplarville Campus

101 Highway 11 North, Poplarville, Mississippi 39470

Phone: (601) 403-1000

Website: [www.prcc.edu](http://www.prcc.edu)

Provides onsite and online classes in general education and career/technical education leading to Associate Degrees or Certificates of Proficiency in a variety of areas.



#### **DELTA COLLEGE OF ARTS & TECHNOLOGY**

105 Gause Blvd W, Slidell, LA 70460

Phone: (985) 643-7730

Website: [www.deltacollege.com](http://www.deltacollege.com)

Offers training for Dental Assistant, Medical Assistant, Medical Office Assistant, & Practical Nursing.



**NORTHSHORE TECHNICAL COMMUNITY COLLEGE**

56707 Behrman St, Slidell, LA 70458

Phone: (985) 646-6415

Website: [www.northshorecollege.edu](http://www.northshorecollege.edu)



Provides variety of academic, technical, university pathway, workforce, and adult education training.

**EARLY INTERVENTION SERVICES / DISABILITIES****Early Intervention Program (First Steps) - Mississippi State Department of Health**

7547 Highway 11 North, Carriere, MS 39426

Phone: 601-799-2796

Website: [http://msdh.ms.gov/msdhsite/\\_static/41,0,74.html](http://msdh.ms.gov/msdhsite/_static/41,0,74.html)

Early Interventionist – Ann Brock, MS; [ann.brock@msdh.state.ms.us](mailto:ann.brock@msdh.state.ms.us)

If you have a child that is under three years old, First Steps may provide developmental services and other resources to help your child meet his or her maximum potential. Services provided include (but are not limited to): screenings, evaluations and assessments, Individualized Family Service Plans (IFSPs), Early Intervention services, and transition plans to preschool services under Part B of IDEA, or other programs.

**Mississippi Department of Education – Office of Special Education**

Parent Hotline: 1-877-544-0408

Website: <http://www.mde.k12.ms.us/OSE>

The Office of Special Education is a service-oriented organization that seeks to improve the education experience for children with disabilities. We strive to nurture a dedicated staff through intense professional development opportunities, field experience, and individual accountability. In keeping with the Individuals with Disabilities Education Act and state law, we help local schools and districts provide effective educational programs to students with disabilities, ages 3-20, who need special education and related services.

**Pearl River County School District - Department of Student Services**

7391 Highway 11, Carriere, MS 39426

Phone: (601) 798-1912; Fax: (601) 799-5165

Director: Mike Posey: [mposey@prc.k12.ms.us](mailto:mposey@prc.k12.ms.us)

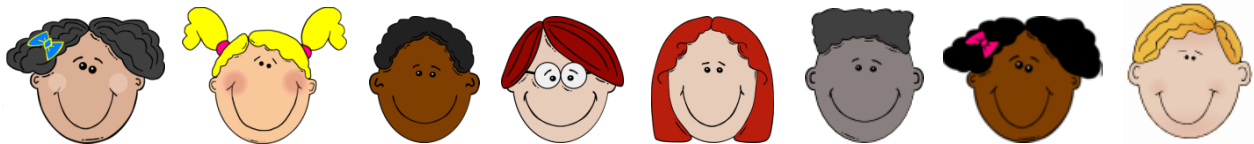
Ages 3+: Supervises the identification of students for Special Education, Intellectually Gifted, and Section 504 services. The department strives to meet the individual needs of students found eligible through appropriate programming and the provision of related services.

**Picayune School District - Office of Exceptional Education**

622 Goodyear Blvd., Picayune, MS 39466  
Phone: (601) 798-4555 | Fax: (601)798-1346  
Director: Diane Wise: [dwise@pcu.k12.ms.us](mailto:dwise@pcu.k12.ms.us)

Ages 3+: Offers a wide range of programs to meet the individual needs of students with special needs through appropriate student identification procedures, achievement testing, and innovative instructional strategies.

**EDUCATION: EARLY CHILDHOOD / CHILDCARE (LICENSED)**



**1ST BAPTIST CARRIERE PRE-SCHOOL**  
7264 Highway 11, Carriere, MS 39426  
Phone: (601) 798-6301  
Maximum Capacity: 45

**ANNIE'S KINDERGARTEN AND DAY CARE**  
716 Davis Street, Picayune, MS 39466  
Phone: (601) 798-3446  
Maximum Capacity: 49

**CHILD DEVELOPMENT LAB SCHOOL**  
101 Highway 11 North, Poplarville, MS 39470  
Phone: (601) 403-1256  
Maximum Capacity: 30

**FIRST BAPTIST CHURCH**  
401 Goodyear Boulevard, Picayune, MS 39466  
Phone: (601) 798-4886  
Maximum Capacity: 120

**FIRST BAPTIST PLAYSCHOOL**  
203 South Main Street, Poplarville, MS 39470  
Phone: (601) 795-4531  
Maximum Capacity: 50

**KREATIVE KINGDOM CHRISTIAN LRING CTR**  
330 Jacob's Road, Poplarville, MS 39470  
Phone: (601) 403-8489  
Maximum Capacity: 95

**LEANNE'S LEARNING CENTER**  
1618 Beech Street, Picayune, MS 39466  
Phone: (601) 374-9604  
Maximum Capacity: 49

**LINDA'S FAMILY CHILD CARE**  
1305 Ausborn Rd, Picayune, MS 39466  
Phone: (601) 798-0643  
Maximum Capacity: 10

**LITTLE RED PRESCHOOL, LLC**  
244 Burgetown Road, Carriere, MS 39426  
Phone: (601) 799-0057  
Maximum Capacity: 30

**MCCARTY LEARNING CENTER**  
401/403 Rosa Street, Picayune, MS 39466  
Phone: (601) 799-2716  
Maximum Capacity: 125

**GFM DAY CARE**

2710 Highway 43 South, Picayune, MS 39466  
Phone: (601) 798-0078  
Maximum Capacity: 100

**KIDS CLUBHOUSE, LLC**

705 West Canal Street, Picayune, MS 39466  
Phone: (601) 798-0917  
Maximum Capacity: 64

**KIDS KINGDOM**

10 Alex Place, Picayune, MS 39466  
Phone: (601) 798-5437  
Maximum Capacity: 95

**KIDS KORNER LEARNING CTR OF PICAYUNE**

611 East Canal Street, Picayune, MS 39466  
Phone: (601) 798-0174  
Maximum Capacity: 150

**KIDS' KAMPUS, TOO**

202 S Strahan Street, Poplarville, MS 39470  
Phone: (601) 795-4853  
Maximum Capacity: 80

**WEE WISDOM LEARNING CENTER**

279 Richardson Ozona Road, Picayune, MS  
Phone: (601) 798-4296  
Maximum Capacity: 70

**PICAYUNE HEAD START COMPLEX**

1220 Hwy 11 South, Picayune, MS 39466  
Phone: (601) 799-1716  
Maximum Capacity: 201

**PICAYUNE SD EARLY HEAD START**

1620 Rosa Street, Picayune, MS 39466  
Phone: (601) 799-4702  
Maximum Capacity: 90

**PICAYUNE SD EARLY HEAD START**

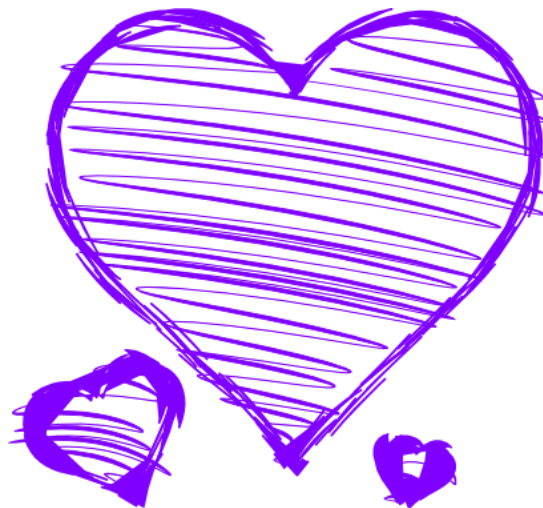
1865 Highway 11 South, Picayune, MS 39466  
Phone: (601) 798-7808  
Maximum Capacity: 90

**POPLARVILLE HEAD START**

205 East Locke Street, Poplarville, MS 39470  
Phone: (601) 795-8011  
Maximum Capacity: 65

**UNION BAPTIST KINDERGARTEN**

1628 West Union Road, Picayune, MS 39466  
Phone: (601) 798-8999  
Maximum Capacity: 81



**EDUCATION: PRIMARY / SECONDARY- PUBLIC**

**Lumberton Public School District**

107 West Tenth Avenue, Lumberton, MS 39455

Phone: (601) 796-2441; Fax: (601) 796-2051

Superintendent: Linda L. Smith, Ph.D.

<http://www.lumberton.k12.ms.us/>

**LUMBERTON ELEMENTARY SCHOOL**

7922 U.S. Highway 11

Lumberton, MS 39455

**Phone: (601) 796-3721**

**Fax: (601) 796-7903**

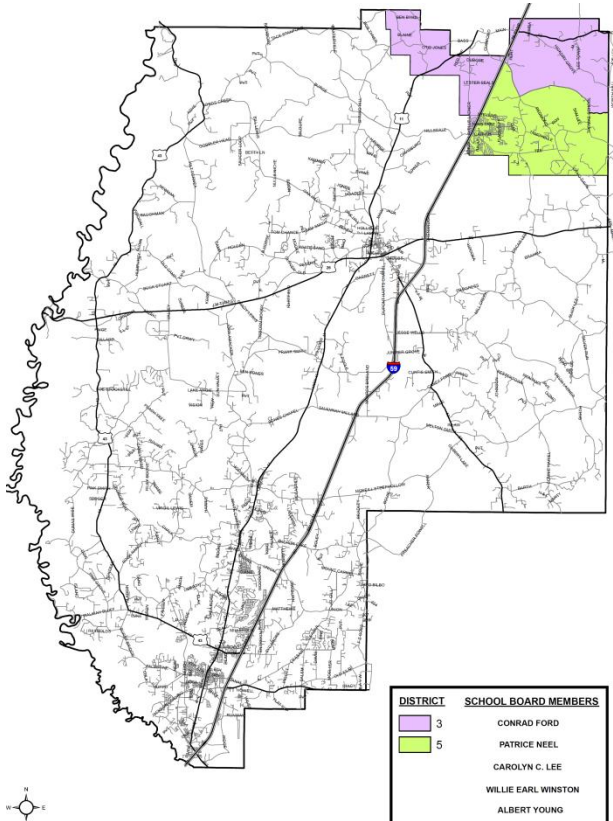
**LUMBERTON HIGH SCHOOL**

7920 U.S. Highway 11

Lumberton, MS 39455

**Phone: (601) 796-2451**

**Fax: (601) 796-7907**





**PEARL RIVER COUNTY SCHOOL DISTRICT**

7441 Highway 11, Carriere, MS 39426  
Phone: (601) 798-7744; Fax: (601) 798-3527  
Superintendent: Mr. Alan Lumpkin  
<http://www.prc.k12.ms.us/>

**CENTER FOR ALTERNATIVE EDUCATION**

461 Burgetown Rd., Carriere, MS 39426  
Phone: (601) 798-6852

**PEARL RIVER CENTRAL HIGH SCHOOL**

7407 HIGHWAY 11, Carriere, MS 39426  
Phone: (601) 798-1986  
Fax: (601) 799-0068

**PEARL RIVER CENTRAL JUNIOR HIGH**

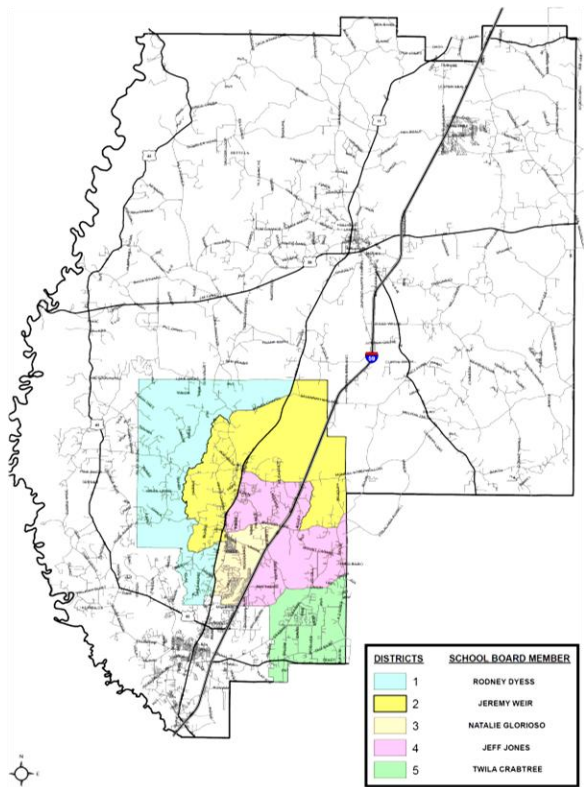
7391 HWY 11, Carriere, MS 39426  
Phone: (601) 798-5654  
Fax: (601) 798-2822

**PEARL RIVER CENTRAL LOWER ELEMENTARY**

116 ALPHABET AVE., Carriere, MS 39426  
Phone: (601) 799-4519  
Fax: (601) 799-0350

**PEARL RIVER CENTRAL UPPER ELEMENTARY**

1592 HENLEYFIELD MCNEILL ROAD, Carriere, MS 39426  
Phone: (601) 798-2864  
Fax: (601) 799-0356



**PICAYUNE SCHOOL DISTRICT**

706 Goodyear Blvd., Picayune, MS 39466  
Phone: (601) 798-3230; Fax: (601) 798-1742

Superintendent: Mr. Dean Shaw

<http://picayune.schooldesk.net/>

**Center for Alternative Education**

900 East Third Street, Picayune, MS 39466

**Phone: (601) 799-0684**

**Fax: (601) 799-0325**

**Nicholson Elementary School**

1887 Hwy 11 South, Picayune, MS 39466

**Phone: (601) 798-6309**

**Fax: (601) 798-1558**

**Picayune Junior High School**

702 Goodyear Blvd., Picayune, MS 39466

**Phone: (601) 798-5449**

**Fax: (601) 749-5902**

**Picayune Memorial High School**

800 Fifth Avenue, Picayune, MS 39466

**Phone: (601) 798-1380**

**Fax: (601) 799-4705**

**PMHS Career & Technology Center**

600 Goodyear Blvd., Picayune, MS 39466

**Phone: (601) 798-7601**

**Fax: (601) 799-4711**

**Roseland Park Elementary School**

1610 Gilcrease Street, Picayune, MS 39466

**Phone: (601) 798-6824**

**Fax: (601) 798-1894**

**South Side Upper Elementary School**

1500 Rosa Street, Picayune, MS 39466

**Phone: (601) 798-1105**

**Fax: (601) 798-6032**

**South Side Lower Elementary School**

400 South Beech Street, Picayune, MS 39466

**Phone: (601) 799-0683**

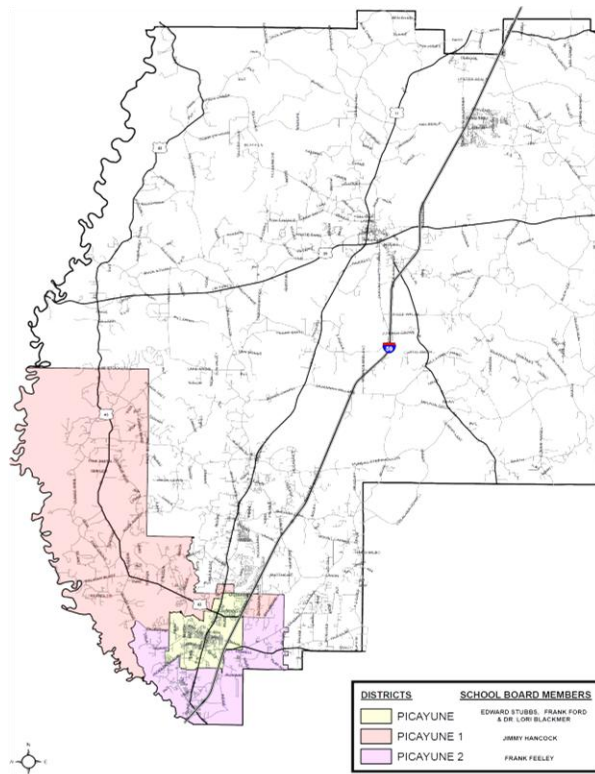
**Fax: (601) 798-6371**

**West Side Elementary School**

111 Kirkwood Street, Picayune, MS 39466

**Phone: (601) 798-3625**

**Fax: (601) 798-1879**



**POPLARVILLE SCHOOL DISTRICT**

302 South Julia Street, Poplarville, MS 39470

Phone: (601) 795-8477; Fax: (601) 795-0712

Superintendent: Mr. Carl Merritt

<http://www.poplarvilleschools.org/>

**MIDDLE SCHOOL OF POPLARVILLE**

6 Spirit Street, Poplarville, MS 39470

Phone: (601) 795-1350

Fax: (601) 795-0712

**POPLARVILLE CAREER DEVELOPMENT CTR**

9 Career Center Circle, Poplarville, MS 39470

Phone: (601) 795-8343

Fax: (601) 795-1353

**POPLARVILLE JR SR HIGH SCHOOL**

#1 Hornet Drive, Poplarville, MS 39470

Phone: (601) 795-8424

Fax: (601) 795-0712

**POPLARVILLE LOWER ELEMENTARY SCHOOL**

804 South Julia Street Suite A, Poplarville, MS 39470

Phone: (601) 795-4736

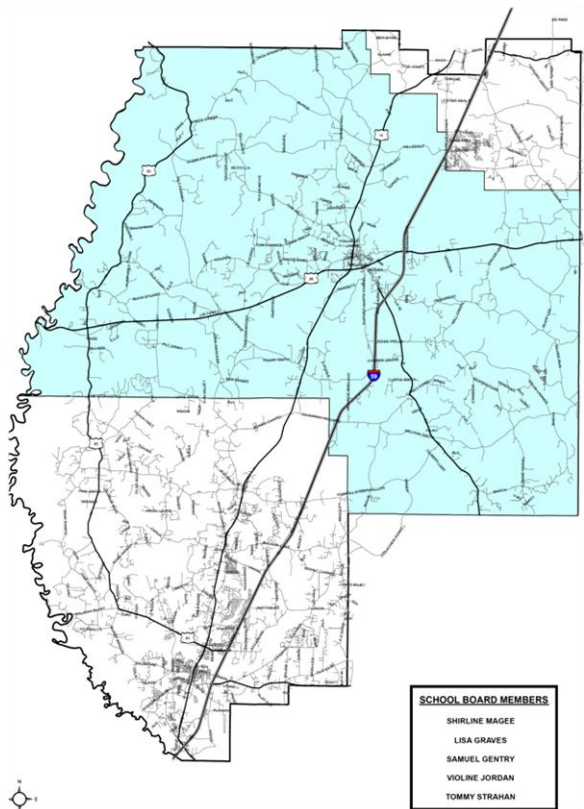
Fax: (601) 795-0712

**POPLARVILLE UPPER ELEMENTARY SCHOOL**

ONE TODD CIRCLE, Poplarville, MS 39470

Phone: (601) 795-8303

Fax: (601) 795-0712



## EDUCATION: PRIMARY / SECONDARY- PRIVATE

### Heritage Christian Academy

401 Goodyear Boulevard, Picayune, MS 39466

Phone: (601)215-6327

Email: [info@HCApicayune.com](mailto:info@HCApicayune.com)

Website: <http://hcapicayune.com/>

Grades: K - 3

### Roseland Park Baptist Church Baptist Church Academy

Address: 2130 Hwy 11 N, Picayune, MS 39466

Phone: (601) 798-5620

Website: [www.rpbccademy.us](http://www.rpbccademy.us)

Grades: PreK - 7

### St. Charles Borromeo Catholic School

Address: 1006 Goodyear Blvd, Picayune, MS 39466

Phone: (601) 799-0860

Grades: PreK – 8

### Union Baptist Church Academy

Address: 1628 W Union Rd, Picayune, MS 39466

Phone: (601) 798-6470

Grades: PreK - 12



## EMPLOYMENT SERVICES

### Picayune WIN Job Center

#### Mississippi Department of Employment Security

2005 Wildwood Rd, Picayune, MS 39466

Phone: (601) 798-3472

Website: <http://mdes.ms.gov/win-job-centers/picayune-win-job-center/>



Services for Individuals: Job Placement, WIOA Services, Priority Services for Veterans, TAA, Job Corps, Referral to Supportive and Rehabilitation Services, Training

Resources for Individuals: Computers with Internet access; Fax; Copier; Resume Preparation software; Career Planning & Assessment; Access to Training information; Resource Center

## LIBRARIES

### PEARL RIVER COUNTY LIBRARY SYSTEM

#### Margaret Reed Crosby Memorial Library

900 Goodyear Blvd., Picayune, MS 39466

Phone: (601) 798 5081

Website: <http://pearlriver.lib.ms.us/>

#### Poplarville Public Library

202 West Beers Street, Poplarville, MS 39470

Phone: (601) 795 8444

Services include: Art & Antiques Collections; Meeting Room & Kitchen; Audio Books; Memorial Books & Gifts; Book Clubs; Microfilms & Microfilm Reader/Printer; Blind & Physically Handicapped Library Services; Mississippi Code; Career Center / Employment; Movies on DVD; Copy Machine; Newspapers; Exhibits (Art & Antiques); Outreach Programs & Materials; Friends of the Library; Preschools, Schools & Senior Center; Interlibrary Loan; Photographs; Internet Access; Proctor Exams for Distance Learning; Large Print Collection; Programs for Adults, Teens & Children; Learning Express Library; Public Computers; Library Cards; Public Typewriters; Local History Room with Mississippi & Genealogy Collections; Reference Help; Magazines – Adult, Teen, & Children; Service to Shut-ins; MAGNOLIA Databases; Stories to Go; Wireless Internet

## FAMILY SUPPORT SERVICES : LOCAL AGENCIES

### Brother's Keeper Ministries

310 E Smith St, Poplarville, MS 39470

Phone: (601) 795-3173

Email: [brotherskeeper01@att.net](mailto:brotherskeeper01@att.net)

A non-profit multi-denominational Christian organization dedicated to meeting the needs of those in all of Pearl River County by networking with local churches, government agencies and other volunteer groups to provide food, counseling, spiritual guidance and mentoring. Food Pantry-Assistance is given to households in need who qualify under USDA guidelines. On-going assistance is given to those whose circumstances do not change. We receive food from Wal-Mart #970 in Picayune each week. We also receive food donations from local schools, churches, organizations, businesses and individuals.



### Christian Care Ministries

321 Williams Ave, Picayune, MS 39466-3946

Phone: (601) 799-3534

Offers assistance in a variety of ways, including purchasing approved medications and clothing and providing gas vouchers to drive to medical appointments, home-delivered meal program for seniors and disabled individuals, and food bank for families in need of support.

**Community of Christians Helping Youth**

120 Street A, Suite C, Picayune, MS 39466

Phone: (601) 569-6567

Email: [www.cchy@att.net](mailto:www.cchy@att.net)

Website: <http://www.cchypicayune.org/>

CCHY provides many programs, including but not limited to: Parenting Classes, Vocational Training, Diploma Program, Youth Homework Assistance, STEM-based Lesson Plans, Performing Arts, Sewing, Nutrition, Fitness, Environmental Education, Reading, Counseling, Hands-on Projects, and Field Trips

**Manna Ministries**

120 Street A, Picayune, MS 39466

Phone: 601-799-2121

Email: [dixie@manna-ministry.net](mailto:dixie@manna-ministry.net); Website: <http://mannaministry.net/>

Manna Ministries provides and restores health and support to those in need without regard to geographical areas. Everyday families struggle to make ends meet and suffer from lack of basic human needs such as food, clothing, shelter, and healthcare.

**MSU Extension Services**

417 Hwy 11 N., Poplarville, Mississippi 39470

Phone: 601-403-2280; Fax: 601-795-0651

Website: <http://extension.msstate.edu/msu-extension-pearl-river-county>

Local agents and staff receive training in a wide range of subject matter and are ready to share their enthusiasm about agriculture, natural resources, community development, family and consumer sciences, and 4-H. If you need answers to your pressing questions, call the Pearl River County extension office. If they don't know the answer, they'll find someone who does!

**Pearl River Valley Opportunity**

204 Julia Street, Poplarville, MS 39470

Phone: (601) 403-2206

Website: <http://prvohs.org/>

- **Family Services:** PRVO helps families meet their basic needs, obtain family stability, and improve their quality of life. We believe in addressing the entire family and supporting them in taking an active role in every phase of their child's development as well.
- **Children Services:** Our services include child health, education, child safety, nutrition, family and community services, as well as mental health and disabilities.
- **Senior Services:** PRVO provides programs and services such as prescription assistance and meal plans which helps improve quality of life for seniors

- **Business Services:** PRVO assists with financing business, economic development activities, and socially and economically disadvantaged minorities and women owned businesses, to create or retain jobs in disadvantaged and remote communities.

**Pregnancy Support Services**

1101 Goodyear Boulevard, Picayune, MS 39466

Phone: 601-799-2668

Website: <http://savalifems.org/>

Services include: Pregnancy Tests, Confidential Peer Counseling, Maternity and Infant Support Materials, Limited Ultrasound, Childbirth Classes, Community Resource Referrals, Earn While You Learn

**Saint Charles Borromeo Catholic Church**

1000 Goodyear Boulevard, Picayune, MS 39466

Phone: (601) 798-1328

Website: <http://www.scborromeo.org/>

Food Pantry: Monday, Tuesday, Thursday & Friday 10:00am-11:30am

**FAMILY SUPPORT SERVICES : REGIONAL AGENCIES**

**American Red Cross of Southeast Mississippi**

Primary Office: 612 E. Pass Road, Gulfport, MS 39507.

Phone: 228-896-4511

Website: <http://www.redcross.org/>



Services include Be Red Cross Ready (Emergency Preparedness); Blood Donation Services; Disaster Services (hurricanes, floods, tornadoes, heat waves, hazardous materials spills and other natural and man-made disasters); Health and Safety Services (First Aid and CPR training to swimming and lifeguarding, and babysitter training); International Services, Service to the Armed Forces (training and support).

**Salvation Army**

2019 22nd Street, Gulfport, MS 39501

Phone: (228) 374-8301

Website: <http://salvationarmym.org/msgulfcoast/locations/>



The Salvation Army MS Gulf Coast provides over a million services every year to residents in South Mississippi. Services include food assistance, utility assistance, shower and laundry program, community fellowship, life skills classes, vital record assistance, clothing assistance, referral assistance, disaster services, and Christmas assistance.



**United Way of South Mississippi**

Knight Nonprofit Center  
11975 Seaway Road, Suite B170, Gulfport, MS 39503  
Phone: (228) 896-2213  
Website: <http://www.unitedwaysm.org/>



Targeted priority areas include education, income (financial stability), and health. These are the building blocks of a good life. We also focus on building a strong foundation of safety net services, ensuring food, clothing and shelter to families in South Mississippi.

**FINANCIAL SERVICES**

**Bancorp South**

201 W Main Ave., Lumberton, MS 39455  
Phone: (601) 796-4212; Fax: (601) 796-5612  
Website: [www.bancorpsouth.com](http://www.bancorpsouth.com)



**BankPlus - Main Office**

951 Memorial Blvd,  
Picayune, MS 39466  
Phone: (601) 798-8300  
Website: [www.bankplus.net](http://www.bankplus.net)

**BankPlus**

115 Williams Ave,  
Picayune, MS 39466  
Phone: (601) 749-3077

**BankPlus**

105 S Main St,  
Poplarville, MS 39470  
Phone: (601) 795-2271

**Firemen's Federal Credit Union**

1620 Goodyear Blvd, Picayune, MS 39466  
Phone: (504) 889-9090  
Website: [www.noffcu.org](http://www.noffcu.org)

**The First- A National Banking Association**

1506 Mississippi 43, Picayune, MS 39466  
Phone: (601) 798-2987; Fax (601) 798-3285  
Website: [www.thefirstbank.com/](http://www.thefirstbank.com/)

**First National Bank – Main Branch**

121 E Canal St,  
Picayune MS 39466  
Phone: (601) 749-3200

**First National Bank - West**

208 W Canal St,  
Picayune, MS 39466  
Phone: (601) 749-3277

**First National Bank - South**

801 Memorial Blvd,  
Picayune, MS 39466  
Phone: (601) 749-3275

**First National -North**

721 Cooper Rd,  
Picayune, MS 39466  
Phone: (601) 749-3272

**First National Bank**


1720 S Main St,  
Poplarville, MS 39470  
Phone: (601) 795-0250

Website: [www.fnbop.com/](http://www.fnbop.com/)

**First Southern Bank**

1321 MS-43, Picayune, MS 39466  
Phone: (601) 798-6438  
Website: [www.fsb-ms.com](http://www.fsb-ms.com)

<b>Hancock Bank - Northside</b> 2400 U.S. 11, Picayune, MS 39466 Phone: (601) 799-0921 Website: <a href="http://www.hancockwhitney.com">www.hancockwhitney.com</a>	<b>Hancock Bank - Southside</b> 229 Memorial Blvd, Picayune, MS 39466 Phone: (601) 799-0939	<b>Hancock Bank - Poplarville</b> 602 S Main St, Poplarville, MS 39470 Phone: (601) 795-4533
<b>Keesler Federal Credit Union - Picayune</b> 2270 Mississippi 43 S, Picayune, MS 39466 Phone: (601) 749-2023 Website: <a href="http://www.kfcu.org">www.kfcu.org</a>	<b>Regions Bank</b> 407, US-11, Picayune, MS 39466 Phone: (800) 734-4667 Website: <a href="http://www.regions.com/">www.regions.com/</a>	

<h2>FINANCIAL TRAINING</h2>	
<p><b>Bank Plus - Picayune</b>          951 Memorial Blvd, Picayune, MS 39466;          Phone: 601-798-8300          Register at:  <a href="https://www.bankplus.net/Personal/CreditPlus/CreditPlus/?terms=training">https://www.bankplus.net/Personal/CreditPlus/CreditPlus/?terms=training</a></p> <p>Offers a financial literacy training that provides residents with important information to make wiser financial decisions. Classes are held for the financial education of individuals 18 years and older. Only those individuals registered will be allowed to enter the training room.</p> <p><b>Manna Ministries</b>          120 Street A, Picayune, MS 39466          Phone: 601-799-2121          Email: <a href="mailto:dixie@mannaministry.net">dixie@mannaministry.net</a> ; Website: <a href="http://mannaministry.net/">http://mannaministry.net/</a></p> <p>Our resources and information are designed to inspire and assist you as you begin to make necessary changes in your financial decisions. No matter what financial issues you are struggling with, remember you are not alone. Our assistance and information include:</p> <ul style="list-style-type: none"> <li>* How to start &amp; maintain a budget</li> <li>* Pitfalls of predatory lending &amp; how to avoid</li> <li>* How to save for emergencies</li> <li>* How to build or repair your credit</li> <li>* How to avoid delinquency &amp; foreclosure on your home</li> <li>* Savings &amp; investing</li> <li>* How to avoid identity thief and fraud</li> </ul>	

### **MSU Extension Services**

417 Hwy 11 N., Poplarville , Mississippi 39470

Phone: 601-403-2280; Fax: 601-795-0651

Website: <http://extension.msstate.edu/msu-extension-pearl-river-county>

Our team of consumer educators provides resources and programs to improve the financial well-being of individuals and families in Mississippi. We work with local and state partners to meet the consumer education needs of citizens from youth through the senior adult years.

### **MEDICAL: HOSPITALS**

#### **Highland Community Hospital**

130 Highland Pkwy, Picayune, MS 39466

Phone: (601) 358-9400

Website: <http://www.forresthealth.org/our-locations/highland-community-hospital/>



The 60-bed facility and affiliated clinics provide access to a broad range of quality services, supporting the community and enhancing the level of care for the residents of Picayune and the surrounding areas. Highland Community Hospital offers the following services:

- Women & Children’s Services
  - Mammography (FDA-approved mammography system for the screening and diagnosis of breast cancer)
  - Pediatrics (inpatient pediatric services)
  - Obstetrics (labor and delivery suites and postpartum rooms)
- Cardiac Services (Cardiology Services, Diagnostic Services, monitored exercise)
- Emergency (provides efficient and effective care for every type of illness, injury and trauma)
- Geriatric Psychiatric Unit The Grove (designed to address the complex needs of older patients)
- Hospitalist Program (a physician acts as a primary physician for patients who do not have a local primary care physician)
- Intensive Care Unit (designed and equipped for the intensive treatment of critically-ill patients)
- Laboratory (offers services 24 hours a day, seven days a week)
- MRI (accredited magnetic resonance imaging service)
- Physical Therapy (perform comprehensive assessments provide a treatment plan)
- Respiratory Therapy (care for patients with acute and chronic breathing disorders)
- Radiology / Imaging (ultrasound, nuclear medicine and the digital CAT scanner)
- Surgical (surgical care in an emergency, including inpatient and outpatient procedures)

**Pearl River County Hospital & Nursing Home**

305 W Moody St, Poplarville, Mississippi 39470

Phone: 601-795-4543

Email: [tommie.staten@prc-med.com](mailto:tommie.staten@prc-med.com)

Website: [www.prc-med.com](http://www.prc-med.com)

Pearl River County Hospital has a 24-hour Emergency Room which provides critical care and life-saving intervention for the under-served rural population of Pearl River, Hancock, and surrounding counties, and our 22 inpatient beds provide professional care for our Acute Care and Swing Bed patients. Ancillary services include Radiological Imaging, Laboratory, Respiratory, as well as Physical Therapy, Occupational Therapy, and Speech Therapy. Other services include our Prime Care Family Health clinic, which offers outpatient medical, wellness, and mental health services, as well as our Intensive Outpatient Program, which offers specialized services for the treatment of depression, anxiety, and other behavioral disturbances for our senior adult and geriatric patients of our community.

**MEDICAL: PEDIATRIC / FAMILY CLINICS****Children's International Medical Group**

(Provider: Christopher M. Fletcher, APRN)

801 Williams Ave, Picayune, MS 39466

Phone: (601) 798-5558; Fax: (601) 798-9915

Website: <http://childrensinternationalmedicalgroup.com/>

**Hattiesburg Clinic Immediate Care – Carriere**

6941 Hwy 11, Ste. A Carriere, MS 39426

Phone: 601-749-3776

Website: <http://www.hattiesburgclinic.com/department/immediate-care-carriere>

**Hattiesburg Clinic: Poplarville Clinic**

(Providers: Wayne E. Grayson, MD; Angela C. Jones, MD; Alicia L. Stevens, MD; Donna G. Cobb, CNP; Christina L. Meador, CNP)

Address: 1407 S Main St, Poplarville, MS 39470

Phone:(601) 795-0659

Website: <http://www.hattiesburgclinic.com/department/the-poplarville-clinic>

**Highland Pediatrics Clinic**

(Provider: Rodriguez J Abraham MD)

409 Carroll St, Picayune, MS 39466

(601) 798-5227

Website: <http://www.forresthealth.org/our-locations/locations-profile/?id=189>



**Pearl River Family Clinic**

(Provider: Dr. Cornel Jeansonne)  
302 US-11 S, Poplarville, MS 39470  
Phone: (601) 403-8284

**Picayune Family Care Center**

(Providers: Delora Denney, MD; James Denney, FNP)  
12 Medical Plaza Blvd # B, Picayune, MS 39466  
Phone: (601) 798-5281  
Facebook Page: [https://www.facebook.com/picayunefamilycareclinic/about/?ref=page\\_internal](https://www.facebook.com/picayunefamilycareclinic/about/?ref=page_internal)

**Picayune Pediatrics**

(Provider: Betty Jo Alexander, CNP)  
517 5<sup>th</sup> Ave, Picayune, MS 39466  
Phone: 601-799-5865; Fax: (601) 749-2328  
Facebook Page:  
<https://www.facebook.com/picayunepediatrics/>

**Picayune Urgent Care**

(Providers: Tammy Vincent, NP; Frederick Joseph Deben, NP)  
Address: 422 Memorial Blvd, Picayune, MS 39466  
Phone: (601) 798-2151

**Poplarville Family Medical Clinic**

(Provider: Grace Ford, FNP-BC)  
1222 S Main St, Poplarville, MS 39470  
Phone: (601) 928 – 6700  
Website: <http://schospital.net/walk-in-clinics/poplarville-family-medical-clinic/>

**Riser Medical Associates**

(Providers: April Ross, MD; Mary Hess, FNP; Carla Penton, FNP; Albert Sanders, NPC; Cari McDonald, FNP; Ajay Acharya M.D.)  
2274 Highway 43 South Picayune, Mississippi 39466  
Phone: (601) 798-5798  
Fax: (601) 798-1058  
Website: <http://risermedical.com/>



## **MEDICAL: PEDIATRIC / FAMILY DENTISTRY**

### **DN Orthodontics**

(Providers: Dr. Jack Devereux; Dr. Brian Duvernay; Dr. Ashley Lestrade)

6420 Highway 11 North, Suite C, Carriere, MS 39426

Phone: (601) 799-3120; Fax: (601) 251-0006

Email: [picayune@dn4smiles.com](mailto:picayune@dn4smiles.com)

Website: <http://www.dn4smiles.com/>



### **Futrell Family Dentistry**

(Provider: David E. Futrell, DDS)

814 Highway 43 N, Picayune, MS 39466

Phone: (601) 798-4221

Email: [futrelldentist@hotmail.com](mailto:futrelldentist@hotmail.com)

### **Griffing, Ward G DDS**

801 Sixth Ave, Picayune, MS 39466

Phone number (601) 798-5380

Facebook Page: <https://www.facebook.com/pages/Griffing-Ward-G-DDS/137850779595639>

### **Growing Smiles of Picayune, PLLC (Medicaid Accepted!)**

(Provider: Horace "Trey" Combs III, DMD)

318 Memorial Blvd, Picayune, MS 39466

Phone: (601) 749-0335

Facebook Page: <https://www.facebook.com/pages/Growing-Smiles-of-Picayune-WDr-Trey-Combs/360835754030240>

### **Patrick Eck, DDS**

1127 Hwy 43 N, Picayune, MS 39466

Phone: (601) 798-5443

Facebook Page: <https://www.facebook.com/pages/Dr-Patrick-Eck-DDS/166003383495177?rf=853477801409642>

### **Penley Family Dentistry**

(Provider: Adrienne Varnado Penley, DMD)

6480 Hwy 11 N, Carriere, MS 39426

Phone: (601) 749-9330; Website: <http://www.penleyfamilydentistry.com/>

### **Picayune Dental Clinic**

(Providers: Hal M. Schrock, DDS; Lyndsay Marks, DMD)

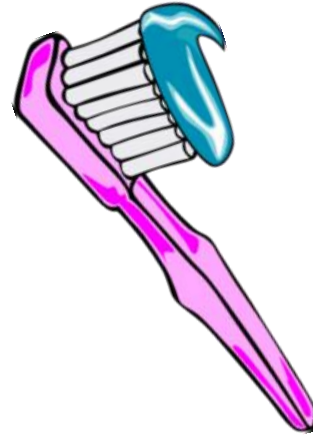
200 Norwood St, Picayune, MS 39466

Phone: (601) 798-8207

Website: <https://www.picayunedentalclinic.com/>

**Picayune Smiles**

(Provider: Joseph Daho, D.D.S.)  
 100 Haydon Oaks Dr, Picayune, MS 39466  
 Phone: (601) 798-1135  
 Email: [picayunesmiles@gmail.com](mailto:picayunesmiles@gmail.com)  
 Facebook Page: [https://www.facebook.com/pg/Picayune-Smiles-182602491789709/about/?ref=page\\_internal](https://www.facebook.com/pg/Picayune-Smiles-182602491789709/about/?ref=page_internal)

**Poplarville Dental Clinic**

(Provider: Jason Estep, DMD)  
 1718 S Main St, Poplarville, MS 39470  
 Phone: (601) 795-8024  
 Website: <http://poplarvilledentalclinic.com>

**MEDICAL: VISION SERVICES****Advanced Eyecare, LLC**

(Provider: Kraig Stasney, O.D.)  
 718 US-11 S, Suite B, Picayune, MS 39466  
 Phone: (601) 799-0707  
 Website: <http://www.idoc.me/>

**Eye Care for Picayune**

(Provider: Dr. David P. Schwarz)  
 Address: 3300 Hwy 11 N a, Picayune, MS 39466  
 Phone:(601) 798-3164  
 Website: <http://picayuneeyecare.com/>

**Hattiesburg Clinic – Picayune**

(Providers: Christopher L. Cooley, MD; Curtis J. Shaffer, OD; Casey C. Wells, CNP)  
 Picayune Family Practice Clinic  
 128 Highland Pkwy. Suite 200, Picayune, MS  
 Phone: 601-358-9630  
 Website: <http://www.hattiesburgclinic.com/department/eye-associates>

**Hattiesburg Clinic – Poplarville**

(Providers: Christopher L. Cooley, MD; Curtis J. Shaffer, OD; Casey C. Wells, CNP)  
 1407 South Main Street, Poplarville, MS 39470  
 Phone: 601-795-0659  
 Website: <http://www.hattiesburgclinic.com>

**Poplarville Eye Clinic**

(Provider: Dr. Bethany G. Harrington, OD)  
 Address: 1249 S Main St C, Poplarville, MS  
 Phone: (601) 795-0137

**Southern Eye Center**

(Providers: Abumere Akinwale, MD; Joseph Childs, MD; Cameron S. Griffith, MD; Jaime Jiménez, MD; Lynn B. McMahan, MD; Kiper C. Nelson, MD; Stanley Saulny, MD; Amy Grubbs, NP-C)  
 1 Sycamore Rd, Carriere, MS 39426  
 Phone: (601) 251-3937  
 Website: <https://southerneyecenter.com/>

**Walmart Vision Center**

(Provider: Johneen Gilich, OD)  
 235 Frontage Rd, Picayune, MS 39466  
 Phone:(601) 799-5064  
 Website: <https://www.walmart.com/>





[/department/eye-associates](#)

**Picayune Eye Clinic**

(Providers: Lori L. Blackmer, OD;  
Erin Anderson, OD)  
Address: 908 6th Ave, Picayune, MS 39466  
Phone: (601) 798-4182

**MENTAL HEALTH / DRUG / ALCOHOL TREATMENT**

**Alcoholics Anonymous (Correctional Institution & Treatment Facility Meetings)**

SOUTH MISSISSIPPI INTERGROUP ASSOCIATION, INC.  
District 10 Meeting: Hancock & Pearl River Counties  
Each Tuesday - Kiln Community Center Hwy 603 & 43, Kiln, MS @ 5:30 P.M  
24-Hour Help Line: (228) 575-9225

**Bonano & Gouguet**

703 W Canal St, Picayune, MS 39466  
Phone: (601) 749-9477

SERVICES INCLUDE: Marriage Counseling, Mental Health Counseling, Community Health, Teen Counseling Programs, Substance Abuse Counseling, Family Counseling, and Couples Counseling

**Bruno Counseling & Consulting Services, LLC**

110 W Erlanger St, Poplarville, MS 39470  
Phone:(601) 746-5125  
Website: <http://www.brunocounselingandconsulting.com/>

SERVICES INCLUDE: Individual Therapy, Group Therapy, Family Therapy, Couples, & Child and Adolescent Therapy

**Gulf Coast Mental Health**

211 Hwy 11S, Picayune, MS  
Phone: 601-798-7001; Fax 601-799-4481  
Website: <http://www.gcmhc.com/>

SERVICES INCLUDE: Individual outpatient therapy, Medication management, Mental Health Care

**Jacob's Well Ministries (Addiction Recovery Center)**

45 Buford Lane, Poplarville MS 39470  
Admissions: (601)909-5505; (769)926-9942  
Website: <http://jacobswellrecoverycenter.com/>

Jacob's Well Recovery Center helps women addicted to drugs and alcohol break those habits and rebuild their lives.

**Pine Grove Outreach**

482 B US HWY 11 North, Carriere , MS 39426  
(601) 799-0849 or toll free 1-877-303-6829

Website: <http://www.pinegrovetreatment.com/>

Free confidential assessment for substance abuse, depression grief, anxiety, marital/family therapy, child and adolescent therapy, and stress management.

**Oasis Community Development Center**

502 Jarrell Street, Picayune, MS 39466  
Phone: 601-799-1744

**Pregnancy Support Services**

1101 Goodyear Blvd, Picayune, MS 39466  
Phone: (601) 749-9015

Website: <http://savalifems.org/>

SERVICES INCLUDE: Pregnancy Tests; Confidential Peer Counseling; Maternity and Infant Support Materials; Limited Ultrasound; Childbirth Classes; Community Resource Referrals; Earn While You Learn

**Teen Challenge of Mississippi**

5 Buford Lane Poplarville, MS 39470  
Phone: 601.795.8063

Website: <http://www.teenchallengems.org/>

Teen Challenge of Mississippi, Inc. is a non-profit Christian organization whose mission is to help people with life-controlling problems become mentally sound, socially adjusted, physically well, and spiritually alive through the power of Jesus Christ. The Teen Challenge approach provides drug and addiction rehabilitation that considers the whole man: physical, psychological and spiritual. The Poplarville Center is for adult females 18 years and older.



**THE ROAD TO  
RECOVERY**

## RECREATIONAL ACTIVITIES

### City of Picayune: Parks & Recreation

1400 U.S. 11, Picayune, MS 39466

Phone: (601) 799-0602

Website: <http://www.picayune.ms.us/departments/parks-recreation/>

- Crosby Commons, Goodyear Blvd.
- Friendship Park – 1701 South Haugh
- Jack Reed Park – 200 Goodyear Blvd
- Mildred Mitchell Park - Daniels Street and Hwy. 43 N
- Snyder Park – 110 South Beech
- Ben Taylor Park – 200 Palestine Rd
- J.P. Johnson Park – 415 Rosa St



### City of Poplarville:

200 MS-26, Poplarville, MS 39470

Phone: (601) 795-8161

- Poplarville City Park & Walking Track  
Hwy 26; Poplarville, MS



### Crosby Arboretum

370 Ridge Road Picayune, MS 39466

Phone: (601) 799-2311; Fax: (601) 799-2372

Website: <http://crosbyarboretum.msstate.edu/>

The Crosby Arboretum is dedicated to educating the public about their environment. This mission is carried out by preserving, protecting, and displaying plants native to the Pearl River Drainage Basin ecosystem, providing environmental and botanical research opportunities, and offering cultural, scientific, and recreational programs.



### Greater Picayune Arts Council

P.O. Box 1512, Picayune, MS 39466

Email: [artscouncilpicayune@yahoo.com](mailto:artscouncilpicayune@yahoo.com)

Website: <http://www.gpacarts.com/index.html>

Greater Picayune Arts Council (GPAC) advocates for the city and region's cultural sector, encourages participation in and equitable access to cultural programs, and promotes integration of diverse cultural amenities into community development. In addition, GPAC will work to promote the arts in regional education systems.

### **Infinity Science Center**

One Discovery Circle, Pearlington, MS 39572

I-10 Exit 2 on the Mississippi Gulf Coast

Phone: (228) 533-9025

Website: <http://www.visitinfinity.com/>



Visitors to the 35,000-square-foot science center enter a world where discovery truly is endless. The fun begins with **outdoor exhibits** such as the colossal F-1 rocket engine, a tsunami buoy, and a U.S. Navy riverine training boat. Just inside the front entrance in the **Science Express Gallery** area, check out our Big Blue Blocks as you design and build your own inventions, or learn about more than 200 species of carnivorous plants. Take a mesmerizing journey in our Immersion Theater with **Science on a Sphere** where you can explore the tracks of hurricanes, the surface of the sun or Mars and much more. In our **Earth and Space Galleries**, you'll find simulators and artifacts, video theaters, Smithsonian-loaned artifacts, and a life-sized, walk-through mockup of the International Space Station's Destiny module.

### **Intermodal Tourist Center & Lower Pearl River Valley Transportation Museum**

200 Hwy 11 South, Picayune MS 39466

Phone: (601) 799-3070

Located in the heart of Historic Downtown Picayune, aka train depot is served by the Amtrak Crescent passenger train twice daily. Inside the Tourist Center is a transportation museum compiled by the Lower Pearl River Valley Volunteers. Their efforts will provide future generations a sense of history and education in the way Picayune/Pearl River County early settlers traveled and worked through the years from horseback, steam boat and space travel.



### **Paint Your Own Studio**

168 Richardson Rd Picayune, MS 39466

Phone: (601) 329-9211

Website: <http://www.paintyourownstudio.com/home.html>

The craftsmen at Paint Your Own Studio make hand-thrown, fired, and cast pottery. We use our hands, wheels, molds, and ovens to create earthenware, stoneware, and porcelain pottery with various glazes. Special orders are available upon request. Call to ask for custom pottery today.





### **Pearl River County Welcome Center**

500 I-59 N, Picayune, MS 39466

Phone: 601.798.8184

Fax: 601.798.8175

Email: [pearl@mississippi.org](mailto:pearl@mississippi.org)

Each is beautifully decorated with fine antique furnishings from the period. Neatly manicured grounds feature picnic tables and grills, telephones, RV waste disposal facilities, 24-hour security, restrooms and weather information. Motor coach parking is available, as well as complimentary refreshments. The Welcome Center staff stands ready to answer any questions you have, and can even help with lodging reservations.



### **Picayune Acadiana Cinema 4**

997 Cooper Road, Picayune, MS, 39466

Movie Line: (601) 749-8345

Website: <http://www.acadianacinemas.com/picayunecinema>

Offers: All Stadium Seating: All Digital Projection:  
All Digital Stereo Sound; 2 Theaters with VIP Style  
Lounge Chairs



#### **ADMISSION & PRICES:**

Evenings: Adult \$8.50; Child/Senior \$6.50

Matinees (before 6:00 p.m.): All seats \$6.50

3D Charge:

add \$2.00

### **Picayune Main Street**

200 Highway 11, South, Picayune, MS

Phone: 601-799-3070

Fax: 601-799-0607

Website:

<https://picayunemainstreet.com/>

- Picayune Street Festivals- includes Classic Car Show, food vendors, and over 300 vendors displaying furniture, custom framing, glassware, plants, antiques, collectibles, pottery, monogramming, jewelry, painting, woodwork, metal work, and numerous other art and craft displays.
- Rockin & Grillin - Showcase for the BBQ Joints of Mississippi
- Shop by Candlelight & Christmas on the Rails



### **The Teddy Bear House Museum**

1299 S. Haugh Ave., Picayune, MS 39466

Phone: (601) 778-BEAR

Website: <http://www.theteddybearhousemuseum.com/>

Hours: Tuesday-Saturday, 10 a.m. – 5 p.m.

Sunday, 12 noon – 5 p.m.

Email: [info@theteddybearhouse.com](mailto:info@theteddybearhouse.com)



The Teddy Bear House Museum is a magical tour through fantasy and history about Teddy Roosevelt with more than 16,000 bear related items. Come to The Teddy Bear House Museum and bring back the wonder of childhood. Step in to experience the magic that fills each room, on a tour you are not going to forget. Experience the house and meet over 12,000 new friends. This is one destination that the whole family can enjoy adults and children alike.

## **YOUTH SUPPORT PROGRAMS**

### **Boy Scouts of America**

Pine Burr Area Council (services Pearl River County)

1318 Hardy St, Hattiesburg, MS 39401

Phone: (601) 582-2326

<http://www.scouting.org/>

The Boy Scouts of America is one of the nation's largest and most prominent values-based youth development organizations. The BSA provides a program for young people that builds character, trains them in the responsibilities of participating citizenship, and develops personal fitness.

For over a century, the BSA has helped build the future leaders of this country by combining educational activities and lifelong values with fun.



**Prepared. For Life.™**

### **Community of Christians Helping Youth (CCHY)**

120 Street A, Suite C, Picayune, MS 39466

Phone: (228) 304-2396; [cchy@att.net](mailto:cchy@att.net)

CCHY provides many programs for the youth, including but not limited to:  
Homework Assistance; STEM-based Lesson Plans; Performing Arts; Sewing; Nutrition; Fitness;  
Environmental Education;  
Bible Study; Reading; Counseling; Hands-on Projects; Field Trips



### **Girl Scouts Greater Mississippi – Headquarters / Service Center**

1471 West County Line Road, Jackson, MS 39213

Phone: 601-366-0607 ; Fax: 601-366-0664

Website: <http://gsgms.org/index.php>



**Girl Scouts®**

Helping girls discover their strengths, passions, and talents. Today we continue the Girl Scout mission of building girls of courage, confidence, and character who make the world a better place. We're the preeminent leadership development organization for girls. And with programs for girls from coast to coast and across the globe, Girl Scouts offers every girl a chance to do something amazing.

### **Pearl River County 4-H**

401 W Lamar St, Poplarville, MS 39470

Phone: (601) 403-2280

Website: <http://extension.msstate.edu/msu-extension-pearl-river-county/pearl-river-county-4h>



For 5–18 years olds who want to learn by doing, like to receive recognition for work well done, want to learn skills that can help in future careers, or wish to develop leadership skills.

### **Picayune on Stage Theater Group**

322 West Canal Street, Picayune, MS

Phone: (601) 749.5551

Email: [poscalendar@gmail.com](mailto:poscalendar@gmail.com)

Website: <http://picayuneonstage.com>



Picayune On Stage was founded in 1980 with the purpose of presenting live performances of the highest quality. POS also offers an opportunity for theatrical education and enrichment for the youth of all ages.

### **Picayune Youth Athletic Association (PYAA)**

P.O. Box 1111, Picayune, MS 39466

Phone: 601-273-1871

Website: [www.pyaabaseball.net](http://www.pyaabaseball.net)

Facebook Page:

<https://www.facebook.com/pyaabaseball/>

Picayune youth ages 4 and up softball, baseball, soccer, and football teams registration.



### **Poplarville Athletic Association**

P.O. Box 822, Poplarville, MS 39470

Phone: (601) 463-0688

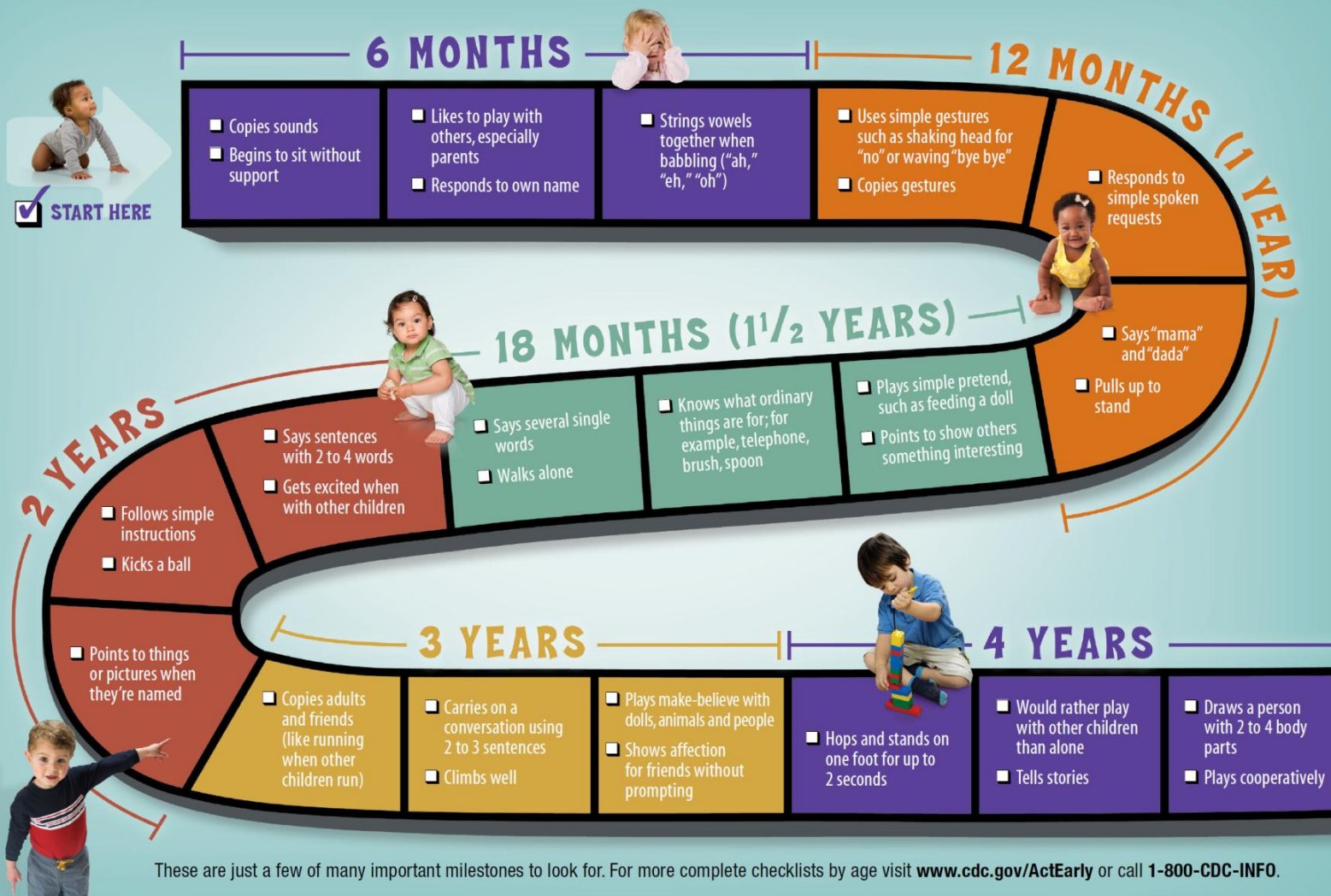
Website: <http://www.leaguelineup.com/welcome.asp?url=poplarville>

Poplarville youth ages 4 and up softball, baseball, soccer, and football teams registration.



# Your Child's Early Development is a Journey

Check off the milestones your child has reached and share your child's progress with the doctor at every visit.



For more information about the  
Southern Pearl River County  
Excel By 5 Coalition, visit us at:

[http://www.excelby5.com/  
southern-pearl-river-county](http://www.excelby5.com/southern-pearl-river-county)



---

CANDIDATE  
EARLY CHILDHOOD COMMUNITY

---

**SOUTHERN PEARL RIVER COUNTY**